

Datasheet for ABIN2791255
anti-CCDC149 antibody (N-Term)[Go to Product page](#)

1 Image

Overview

Quantity:	100 µL
Target:	CCDC149
Binding Specificity:	N-Term
Reactivity:	Human, Guinea Pig, Horse, Pig, Cow, Dog, Mouse, Rabbit, Rat
Host:	Rabbit
Clonality:	Polyclonal
Conjugate:	This CCDC149 antibody is un-conjugated
Application:	Western Blotting (WB)

Product Details

Immunogen:	The immunogen is a synthetic peptide directed towards the N-terminal region of Human CCDC149
Sequence:	HFAAHEREDL VQQLERAKEQ IESLEHDLQA SVDELQDVKE ERSSYQDKVE
Predicted Reactivity:	Cow: 100%, Dog: 100%, Guinea Pig: 93%, Horse: 100%, Human: 100%, Mouse: 93%, Pig: 100%, Rabbit: 93%, Rat: 93%
Characteristics:	This is a rabbit polyclonal antibody against CCDC149. It was validated on Western Blot.
Purification:	Affinity Purified

Target Details

Target:	CCDC149
---------	---------

Target Details

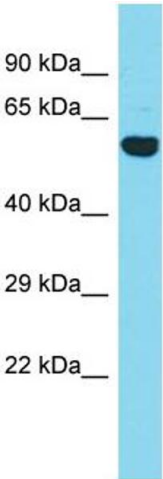
Alternative Name:	CCDC149 (CCDC149 Products)
Background:	The function of this protein remains unknown. Alias Symbols: - Protein Interaction Partner: APP, PRNP, UBC, Protein Size: 529
Molecular Weight:	58 kDa
Gene ID:	91050
NCBI Accession:	NM_173463 , NP_775734

Application Details

Application Notes:	Optimal working dilutions should be determined experimentally by the investigator.
Comment:	Antigen size: 529 AA
Restrictions:	For Research Use only

Handling

Format:	Liquid
Concentration:	Lot specific
Buffer:	Liquid. Purified antibody supplied in 1x PBS buffer with 0.09 % (w/v) sodium azide and 2 % sucrose.
Preservative:	Sodium azide
Precaution of Use:	This product contains Sodium azide: a POISONOUS AND HAZARDOUS SUBSTANCE which should be handled by trained staff only.
Handling Advice:	Avoid repeated freeze-thaw cycles.
Storage:	-20 °C
Storage Comment:	For short term use, store at 2-8°C up to 1 week. For long term storage, store at -20°C in small aliquots to prevent freeze-thaw cycles.



Western Blotting

Image 1. Host: Rabbit Target Name: CCDC149 Sample Type: Fetal Heart lysates Antibody Dilution: 1.0ug/ml