

Datasheet for ABIN2791258  
**anti-R3HDM4 antibody (N-Term)**[Go to Product page](#)

## 1 Image

## Overview

Quantity:	100 µL
Target:	R3HDM4
Binding Specificity:	N-Term
Reactivity:	Human, Mouse, Cow, Dog, Guinea Pig, Pig, Rat, Zebrafish (Danio rerio)
Host:	Rabbit
Clonality:	Polyclonal
Conjugate:	This R3HDM4 antibody is un-conjugated
Application:	Western Blotting (WB)

## Product Details

Immunogen:	The immunogen is a synthetic peptide directed towards the N-terminal region of Human R3HDM4
Sequence:	RRKQHFINKA VRNSDLVPA KGRKSLQRLE NTQYLLTLE TDGGLPGLED
Predicted Reactivity:	Cow: 100%, Dog: 100%, Guinea Pig: 93%, Human: 100%, Mouse: 93%, Pig: 100%, Rat: 100%, Zebrafish: 79%
Characteristics:	This is a rabbit polyclonal antibody against R3HDM4. It was validated on Western Blot.
Purification:	Affinity Purified

## Target Details

Target:	R3HDM4
---------	--------

## Target Details

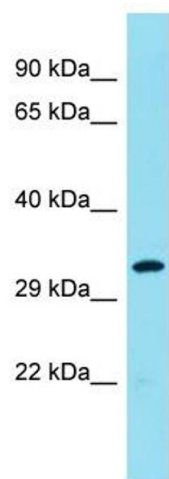
Alternative Name:	R3HDM4 ( <a href="#">R3HDM4 Products</a> )
Background:	The function of this protein remains unknown. Alias Symbols: C19orf22 Protein Interaction Partner: UBC, Protein Size: 268
Molecular Weight:	30 kDa
Gene ID:	91300
NCBI Accession:	<a href="#">NM_138774</a> , <a href="#">NP_620129</a>
UniProt:	<a href="#">Q96D70</a>

## Application Details

Application Notes:	Optimal working dilutions should be determined experimentally by the investigator.
Comment:	Antigen size: 268 AA
Restrictions:	For Research Use only

## Handling

Format:	Liquid
Concentration:	Lot specific
Buffer:	Liquid. Purified antibody supplied in 1x PBS buffer with 0.09 % (w/v) sodium azide and 2 % sucrose.
Preservative:	Sodium azide
Precaution of Use:	This product contains Sodium azide: a POISONOUS AND HAZARDOUS SUBSTANCE which should be handled by trained staff only.
Handling Advice:	Avoid repeated freeze-thaw cycles.
Storage:	-20 °C
Storage Comment:	For short term use, store at 2-8°C up to 1 week. For long term storage, store at -20°C in small aliquots to prevent freeze-thaw cycles.



Western Blotting

**Image 1.** Host: Rabbit Target Name: R3HDM4 Sample Type: MCF7 Whole Cell lysates Antibody Dilution: 1.0ug/ml