



[Go to Product page](#)

Datasheet for ABIN2791263

## anti-C11ORF52 antibody (C-Term)

### 1 Image

#### Overview

Quantity:	100 µL
Target:	C11ORF52
Binding Specificity:	C-Term
Reactivity:	Human, Mouse, Rabbit, Rat, Cow, Dog, Guinea Pig, Horse
Host:	Rabbit
Clonality:	Polyclonal
Conjugate:	This C11ORF52 antibody is un-conjugated
Application:	Western Blotting (WB)

#### Product Details

Immunogen:	The immunogen is a synthetic peptide directed towards the C-terminal region of Human C11orf52
Sequence:	SNLHYADIQV CSRPHAREVK HVHLENATEY ATLRFPQATP RYDSKNGTLV
Predicted Reactivity:	Cow: 93%, Dog: 100%, Guinea Pig: 93%, Horse: 100%, Human: 100%, Mouse: 86%, Rabbit: 100%, Rat: 86%
Characteristics:	This is a rabbit polyclonal antibody against C11orf52. It was validated on Western Blot.
Purification:	Affinity Purified

#### Target Details

Target:	C11ORF52
---------	----------

## Target Details

---

Alternative Name: C11orf52 ([C11ORF52 Products](#))

---

Background: The function of this protein remains unknown.  
Alias Symbols: -  
Protein Interaction Partner: SRPK1, APP,  
Protein Size: 123

---

Molecular Weight: 13 kDa

---

Gene ID: 91894

---

NCBI Accession: [NM\\_080659](#), [NP\\_542390](#)

---

UniProt: [Q96A22](#)

---

## Application Details

---

Application Notes: Optimal working dilutions should be determined experimentally by the investigator.

---

Comment: Antigen size: 123 AA

---

Restrictions: For Research Use only

---

## Handling

---

Format: Liquid

---

Concentration: Lot specific

---

Buffer: Liquid. Purified antibody supplied in 1x PBS buffer with 0.09 % (w/v) sodium azide and 2 % sucrose.

---

Preservative: Sodium azide

---

Precaution of Use: This product contains Sodium azide: a POISONOUS AND HAZARDOUS SUBSTANCE which should be handled by trained staff only.

---

Handling Advice: Avoid repeated freeze-thaw cycles.

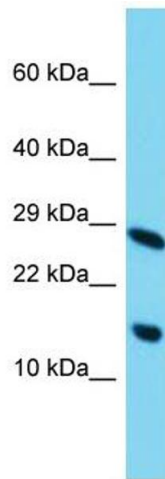
---

Storage: -20 °C

---

Storage Comment: For short term use, store at 2-8°C up to 1 week. For long term storage, store at -20°C in small aliquots to prevent freeze-thaw cycles.

---



### Western Blotting

**Image 1.** Host: Rabbit Target Name: C11orf52 Sample Type: HepG2 Whole Cell lysates Antibody Dilution: 1.0ug/ml