

Datasheet for ABIN2791264
anti-TPGS1 antibody (Middle Region)[Go to Product page](#)

1 Image

Overview

Quantity:	100 µL
Target:	TPGS1
Binding Specificity:	Middle Region
Reactivity:	Human, Mouse, Rat, Guinea Pig, Rabbit, Cow, Dog
Host:	Rabbit
Clonality:	Polyclonal
Conjugate:	This TPGS1 antibody is un-conjugated
Application:	Western Blotting (WB)

Product Details

Immunogen:	The immunogen is a synthetic peptide directed towards the middle region of Mouse Tpgs1
Sequence:	DGRTYSELLK RVCRDGGAPE EVVAPLLRKI QCRDHEAVPL GIFRTGMLSC
Predicted Reactivity:	Cow: 92%, Dog: 92%, Guinea Pig: 92%, Human: 100%, Mouse: 92%, Rabbit: 77%, Rat: 92%
Characteristics:	This is a rabbit polyclonal antibody against Tpgs1. It was validated on Western Blot.
Purification:	Affinity Purified

Target Details

Target:	TPGS1
Alternative Name:	Tpgs1 (TPGS1 Products)
Background:	Tpgs1 may act in the targeting of the tubulin polyglutamylase complex. It is required for the

Target Details

development of the spermatid flagellum.

Alias Symbols: AV005629, Gtrgeo22, PGs1, Tpgs1

Protein Size: 303

Molecular Weight: 32 kDa

Gene ID: 110012

NCBI Accession: [NM_148934](#), [NP_683736](#)

UniProt: [Q99MS8](#)

Application Details

Application Notes: Optimal working dilution should be determined by the investigator.

Restrictions: For Research Use only

Handling

Format: Liquid

Concentration: 1 mg/mL

Buffer: Liquid. Purified antibody supplied in 1x PBS buffer with 0.09 % (w/v) sodium azide and 2 % sucrose.

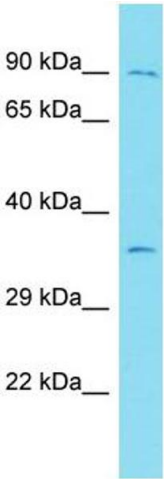
Preservative: Sodium azide

Precaution of Use: This product contains Sodium azide: a POISONOUS AND HAZARDOUS SUBSTANCE which should be handled by trained staff only.

Handling Advice: Avoid repeat freeze-thaw cycles.

Storage: -20 °C

Storage Comment: For short term use, store at 2-8°C up to 1 week. For long term storage, store at -20°C in small aliquots to prevent freeze-thaw cycles.



Western Blotting

Image 1.