

Datasheet for ABIN2791273  
**anti-ARMC6 antibody (N-Term)**[Go to Product page](#)

## 1 Image

## Overview

Quantity:	100 µL
Target:	ARMC6
Binding Specificity:	N-Term
Reactivity:	Human, Mouse, Rat, Cow, Dog, Guinea Pig, Horse, Rabbit, Zebrafish (Danio rerio)
Host:	Rabbit
Clonality:	Polyclonal
Conjugate:	This ARMC6 antibody is un-conjugated
Application:	Western Blotting (WB)

## Product Details

Immunogen:	The immunogen is a synthetic peptide directed towards the N-terminal region of Human ARMC6
Sequence:	VATLTQNADE ADLTCSGIRC VRHACKLHEQ NRQDLVKAGV LPLLTGAITH
Predicted Reactivity:	Cow: 93%, Dog: 93%, Guinea Pig: 93%, Horse: 93%, Human: 100%, Mouse: 100%, Rabbit: 93%, Rat: 93%, Zebrafish: 93%
Characteristics:	This is a rabbit polyclonal antibody against ARMC6. It was validated on Western Blot.
Purification:	Affinity Purified

## Target Details

Target:	ARMC6
---------	-------

## Target Details

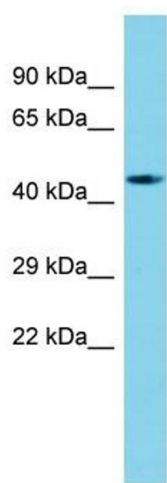
Alternative Name:	ARMC6 ( <a href="#">ARMC6 Products</a> )
Background:	<p>The function of this gene's protein product has not been determined. A related protein in mouse suggests that this protein has a conserved function. Two transcript variants encoding different isoforms have been found for this gene.</p> <p>Alias Symbols: R30923_1</p> <p>Protein Interaction Partner: UBC, FUS, SUMO1, CLN3, UBD, SUMO2, TERF2, WRAP73, STK36, AP1S1,</p> <p>Protein Size: 476</p>
Molecular Weight:	51 kDa
Gene ID:	93436
NCBI Accession:	<a href="#">NM_033415</a> , <a href="#">NP_219483</a>

## Application Details

Application Notes:	Optimal working dilutions should be determined experimentally by the investigator.
Comment:	Antigen size: 476 AA
Restrictions:	For Research Use only

## Handling

Format:	Liquid
Concentration:	Lot specific
Buffer:	Liquid. Purified antibody supplied in 1x PBS buffer with 0.09 % (w/v) sodium azide and 2 % sucrose.
Preservative:	Sodium azide
Precaution of Use:	This product contains Sodium azide: a POISONOUS AND HAZARDOUS SUBSTANCE which should be handled by trained staff only.
Handling Advice:	Avoid repeated freeze-thaw cycles.
Storage:	-20 °C
Storage Comment:	For short term use, store at 2-8°C up to 1 week. For long term storage, store at -20°C in small aliquots to prevent freeze-thaw cycles.



Western Blotting

**Image 1.** Host: Rabbit Target Name: ARMC6 Sample Type: Fetal Brain lysates Antibody Dilution: 1.0ug/ml