



[Go to Product page](#)

Datasheet for ABIN2791277

## anti-L3HYPDH antibody (C-Term)

### 1 Image

#### Overview

Quantity:	100 µL
Target:	L3HYPDH
Binding Specificity:	C-Term
Reactivity:	Human, Mouse, Rat, Rabbit, Cow, Dog, Guinea Pig, Horse
Host:	Rabbit
Clonality:	Polyclonal
Conjugate:	This L3HYPDH antibody is un-conjugated
Application:	Western Blotting (WB)

#### Product Details

Immunogen:	The immunogen is a synthetic peptide directed towards the C-terminal region of Human L3HYPDH
Sequence:	AFKSSATGSV FTGKAVREAK CGDFKAVIVE VSGQAHYTGT ASFIIEDDDP
Predicted Reactivity:	Cow: 100%, Dog: 100%, Guinea Pig: 93%, Horse: 100%, Human: 100%, Mouse: 93%, Rabbit: 86%, Rat: 93%
Characteristics:	This is a rabbit polyclonal antibody against L3HYPDH. It was validated on Western Blot.
Purification:	Affinity Purified

#### Target Details

Target:	L3HYPDH
---------	---------

## Target Details

---

Alternative Name:	L3HYPDH ( <a href="#">L3HYPDH Products</a> )
Background:	<p>L3HYPDH catalyzes the dehydration of trans-3-hydroxy-L-proline to delta-1-pyrroline-2-carboxylate (Pyr2C). It may be required to degrade trans-3-hydroxy-L-proline from the diet and originating from the degradation of proteins such as collagen-IV that contain it.</p> <p>Alias Symbols: -</p> <p>Protein Interaction Partner: WDFY1,</p> <p>Protein Size: 354</p>
Molecular Weight:	38 kDa
Gene ID:	112849
NCBI Accession:	<a href="#">NM_144581</a> , <a href="#">NP_653182</a>
UniProt:	<a href="#">Q96EM0</a>

## Application Details

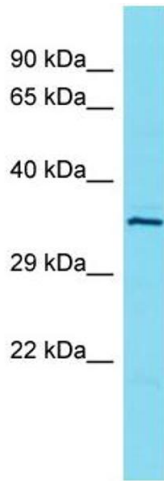
---

Application Notes:	Optimal working dilutions should be determined experimentally by the investigator.
Comment:	Antigen size: 354 AA
Restrictions:	For Research Use only

## Handling

---

Format:	Liquid
Concentration:	Lot specific
Buffer:	Liquid. Purified antibody supplied in 1x PBS buffer with 0.09 % (w/v) sodium azide and 2 % sucrose.
Preservative:	Sodium azide
Precaution of Use:	This product contains Sodium azide: a POISONOUS AND HAZARDOUS SUBSTANCE which should be handled by trained staff only.
Handling Advice:	Avoid repeated freeze-thaw cycles.
Storage:	-20 °C
Storage Comment:	For short term use, store at 2-8°C up to 1 week. For long term storage, store at -20°C in small aliquots to prevent freeze-thaw cycles.



### Western Blotting

**Image 1.** Host: Rabbit Target Name: L3HYPDH Sample Type: OVCAR-3 Whole Cell lysates Antibody Dilution: 1.0ug/ml