



[Go to Product page](#)

Datasheet for ABIN2791285

anti-GINM1 antibody (Middle Region)

1 Image

Overview

Quantity:	100 µL
Target:	GINM1
Binding Specificity:	Middle Region
Reactivity:	Human, Mouse, Rat, Cow, Dog, Guinea Pig, Horse, Rabbit
Host:	Rabbit
Clonality:	Polyclonal
Conjugate:	This GINM1 antibody is un-conjugated
Application:	Western Blotting (WB)

Product Details

Immunogen:	The immunogen is a synthetic peptide directed towards the middle region of Human GINM1
Sequence:	SVRILVHEWP MTSGSSLQLI VIQEEVVEID GKQVQKQDVT EIDILVKNRG
Predicted Reactivity:	Cow: 93%, Dog: 93%, Guinea Pig: 86%, Horse: 93%, Human: 100%, Mouse: 79%, Rabbit: 79%, Rat: 93%
Characteristics:	This is a rabbit polyclonal antibody against GINM1. It was validated on Western Blot.
Purification:	Affinity Purified

Target Details

Target:	GINM1
Alternative Name:	GINM1 (GINM1 Products)

Target Details

Background: The function of this protein remains unknown.
Alias Symbols: C6orf72, dJ12G14.2
Protein Interaction Partner: UBC,
Protein Size: 330

Molecular Weight: 34 kDa

Gene ID: 116254

NCBI Accession: [NM_138785](#), [NP_620140](#)

UniProt: [Q9NU53](#)

Application Details

Application Notes: Optimal working dilutions should be determined experimentally by the investigator.

Comment: Antigen size: 330 AA

Restrictions: For Research Use only

Handling

Format: Liquid

Concentration: Lot specific

Buffer: Liquid. Purified antibody supplied in 1x PBS buffer with 0.09 % (w/v) sodium azide and 2 % sucrose.

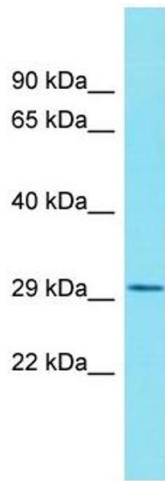
Preservative: Sodium azide

Precaution of Use: This product contains Sodium azide: a POISONOUS AND HAZARDOUS SUBSTANCE which should be handled by trained staff only.

Handling Advice: Avoid repeated freeze-thaw cycles.

Storage: -20 °C

Storage Comment: For short term use, store at 2-8°C up to 1 week. For long term storage, store at -20°C in small aliquots to prevent freeze-thaw cycles.



Western Blotting

Image 1. Host: Rabbit Target Name: GINM1 Sample Type: PANC1 Whole Cell lysates Antibody Dilution: 1.0ug/ml