

Datasheet for ABIN2791299
anti-CCDC159 antibody (C-Term)[Go to Product page](#)

1 Image

Overview

Quantity:	100 µL
Target:	CCDC159
Binding Specificity:	C-Term
Reactivity:	Human
Host:	Rabbit
Clonality:	Polyclonal
Conjugate:	This CCDC159 antibody is un-conjugated
Application:	Western Blotting (WB)

Product Details

Immunogen:	The immunogen is a synthetic peptide directed towards the C-terminal region of Human CCDC159
Sequence:	CRKILTKMKQ QGHETAACPE TEEIPQGASG CWKDDLQKEL SDIWSAVHVL
Predicted Reactivity:	Human: 100%
Characteristics:	This is a rabbit polyclonal antibody against CCDC159. It was validated on Western Blot.
Purification:	Affinity Purified

Target Details

Target:	CCDC159
Alternative Name:	CCDC159 (CCDC159 Products)

Target Details

Background: The function of this protein remains unknown.
Alias Symbols: -
Protein Interaction Partner: COIL,
Protein Size: 297

Molecular Weight: 33 kDa

Gene ID: 126075

NCBI Accession: [NM_001080503](#), [NP_001073972](#)

Application Details

Application Notes: Optimal working dilutions should be determined experimentally by the investigator.

Comment: Antigen size: 297 AA

Restrictions: For Research Use only

Handling

Format: Liquid

Concentration: Lot specific

Buffer: Liquid. Purified antibody supplied in 1x PBS buffer with 0.09 % (w/v) sodium azide and 2 % sucrose.

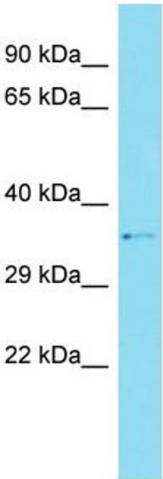
Preservative: Sodium azide

Precaution of Use: This product contains Sodium azide: a POISONOUS AND HAZARDOUS SUBSTANCE which should be handled by trained staff only.

Handling Advice: Avoid repeated freeze-thaw cycles.

Storage: -20 °C

Storage Comment: For short term use, store at 2-8°C up to 1 week. For long term storage, store at -20°C in small aliquots to prevent freeze-thaw cycles.



Western Blotting

Image 1. Host: Rabbit Target Name: CCDC159 Sample Type: Hela Whole cell lysates Antibody Dilution: 1.0ug/ml