



[Go to Product page](#)

Datasheet for ABIN2791318

## anti-C14orf166B antibody (N-Term)

### 1 Image

#### Overview

Quantity:	100 µL
Target:	C14orf166B (C14ORF166B)
Binding Specificity:	N-Term
Reactivity:	Human, Guinea Pig
Host:	Rabbit
Clonality:	Polyclonal
Conjugate:	This C14orf166B antibody is un-conjugated
Application:	Western Blotting (WB)

#### Product Details

Immunogen:	The immunogen is a synthetic peptide directed towards the N-terminal region of Human C14orf166B
Sequence:	GMPPDEIEIE PVRQSSDKML YCEAESPTV EKVKPARENS ETDLEIEDDE
Predicted Reactivity:	Guinea Pig: 91%, Human: 100%
Characteristics:	This is a rabbit polyclonal antibody against C14orf166B. It was validated on Western Blot.
Purification:	Affinity Purified

#### Target Details

Target:	C14orf166B (C14ORF166B)
Alternative Name:	C14orf166B ( <a href="#">C14ORF166B Products</a> )

## Target Details

---

Background: The function of this protein remains unknown.  
Alias Symbols: -  
Protein Size: 488

---

Molecular Weight: 54 kDa

---

Gene ID: 145497

---

NCBI Accession: [NM\\_194287](#), [NP\\_919263](#)

---

UniProt: [Q0VAA2](#)

---

## Application Details

---

Application Notes: Optimal working dilutions should be determined experimentally by the investigator.

---

Comment: Antigen size: 488 AA

---

Restrictions: For Research Use only

---

## Handling

---

Format: Liquid

---

Concentration: Lot specific

---

Buffer: Liquid. Purified antibody supplied in 1x PBS buffer with 0.09 % (w/v) sodium azide and 2 % sucrose.

---

Preservative: Sodium azide

---

Precaution of Use: This product contains Sodium azide: a POISONOUS AND HAZARDOUS SUBSTANCE which should be handled by trained staff only.

---

Handling Advice: Avoid repeated freeze-thaw cycles.

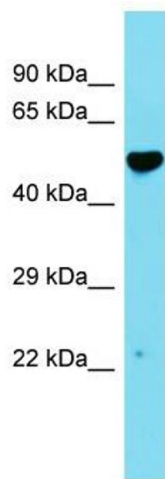
---

Storage: -20 °C

---

Storage Comment: For short term use, store at 2-8°C up to 1 week. For long term storage, store at -20°C in small aliquots to prevent freeze-thaw cycles.

---



### Western Blotting

**Image 1.** Host: Rabbit Target Name: C14orf166B Sample Type: Fetal Heart lysates Antibody Dilution: 1.0ug/ml