

Datasheet for ABIN2791321  
**anti-TEKT5 antibody (N-Term)**



[Go to Product page](#)

1 Image

## Overview

Quantity:	100 µL
Target:	TEKT5
Binding Specificity:	N-Term
Reactivity:	Human, Mouse, Rat, Cow, Dog, Guinea Pig, Horse, Pig, Rabbit
Host:	Rabbit
Clonality:	Polyclonal
Conjugate:	This TEKT5 antibody is un-conjugated
Application:	Western Blotting (WB)

## Product Details

Immunogen:	The immunogen is a synthetic peptide directed towards the N-terminal region of Human TEKT5
Sequence:	QVRGAEASRL WASRLTDDSM RLLQDKDQLT HQMQEGTCRN LGQRLSDIGF
Predicted Reactivity:	Cow: 93%, Dog: 93%, Guinea Pig: 86%, Horse: 93%, Human: 100%, Mouse: 93%, Pig: 93%, Rabbit: 93%, Rat: 93%
Characteristics:	This is a rabbit polyclonal antibody against TEKT5. It was validated on Western Blot.
Purification:	Affinity Purified

## Target Details

Target:	TEKT5
Alternative Name:	TEKT5 ( <a href="#">TEKT5 Products</a> )

Target Details

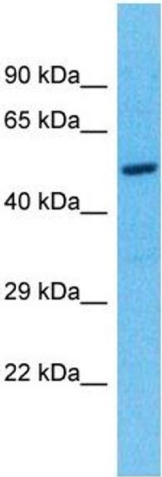
Background:	TEKT5 is a structural component of ciliary and flagellar microtubules. It forms filamentous polymers in the walls of ciliary and flagellar microtubules.  Alias Symbols: -  Protein Interaction Partner: KLHL38, TENC1,  Protein Size: 485
Molecular Weight:	53 kDa
Gene ID:	146279
NCBI Accession:	<a href="#">NM_144674</a> , <a href="#">NP_653275</a>
UniProt:	<a href="#">Q96M29</a>

Application Details

Application Notes:	Optimal working dilution should be determined by the investigator.
Restrictions:	For Research Use only

Handling

Format:	Liquid
Concentration:	1 mg/mL
Buffer:	Liquid. Purified antibody supplied in 1x PBS buffer with 0.09 % (w/v) sodium azide and 2 % sucrose.
Preservative:	Sodium azide
Precaution of Use:	This product contains Sodium azide: a POISONOUS AND HAZARDOUS SUBSTANCE which should be handled by trained staff only.
Handling Advice:	Avoid repeat freeze-thaw cycles.
Storage:	-20 °C
Storage Comment:	For short term use, store at 2-8°C up to 1 week. For long term storage, store at -20°C in small aliquots to prevent freeze-thaw cycles.



**Western Blotting**

**Image 1.**