



[Go to Product page](#)

Datasheet for ABIN2791324

## anti-CCDC64B antibody (N-Term)

### 1 Image

#### Overview

Quantity:	100 µL
Target:	CCDC64B
Binding Specificity:	N-Term
Reactivity:	Human, Cow, Dog, Guinea Pig, Horse, Mouse, Rabbit, Rat
Host:	Rabbit
Clonality:	Polyclonal
Conjugate:	This CCDC64B antibody is un-conjugated
Application:	Western Blotting (WB)

#### Product Details

Immunogen:	The immunogen is a synthetic peptide directed towards the N-terminal region of Human CCDC64B
Sequence:	EARAVELEGD VEALRAQLGE QRSEQQDSGR ERARALSELS EQNLRLSQQL
Predicted Reactivity:	Cow: 100%, Dog: 100%, Guinea Pig: 100%, Horse: 100%, Human: 100%, Mouse: 93%, Rabbit: 90%, Rat: 100%
Characteristics:	This is a rabbit polyclonal antibody against CCDC64B. It was validated on Western Blot.
Purification:	Affinity Purified

#### Target Details

Target:	CCDC64B
---------	---------

## Target Details

---

Alternative Name: [CCDC64B \(CCDC64B Products\)](#)

Background: The function of this protein remains unknown.  
Alias Symbols: BICDR-2  
Protein Interaction Partner: KLC3, UBC,  
Protein Size: 508

Molecular Weight: 56 kDa

Gene ID: 146439

NCBI Accession: [NM\\_001103175, NP\\_001096645](#)

UniProt: [A1A5D9](#)

## Application Details

---

Application Notes: Optimal working dilutions should be determined experimentally by the investigator.

Comment: Antigen size: 508 AA

Restrictions: For Research Use only

## Handling

---

Format: Liquid

Concentration: Lot specific

Buffer: Liquid. Purified antibody supplied in 1x PBS buffer with 0.09 % (w/v) sodium azide and 2 % sucrose.

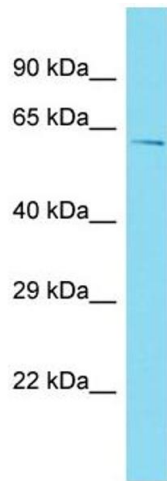
Preservative: Sodium azide

Precaution of Use: This product contains Sodium azide: a POISONOUS AND HAZARDOUS SUBSTANCE which should be handled by trained staff only.

Handling Advice: Avoid repeated freeze-thaw cycles.

Storage: -20 °C

Storage Comment: For short term use, store at 2-8°C up to 1 week. For long term storage, store at -20°C in small aliquots to prevent freeze-thaw cycles.



### Western Blotting

**Image 1.** Host: Rabbit Target Name: CCDC64B Sample Type: NCI-H226 Whole Cell lysates Antibody Dilution: 1.0ug/ml