

Datasheet for ABIN2791326
anti-TMEM190 antibody (C-Term)[Go to Product page](#)

1 Image

Overview

Quantity:	100 µL
Target:	TMEM190
Binding Specificity:	C-Term
Reactivity:	Human
Host:	Rabbit
Clonality:	Polyclonal
Conjugate:	This TMEM190 antibody is un-conjugated
Application:	Western Blotting (WB)

Product Details

Immunogen:	The immunogen is a synthetic peptide directed towards the C-terminal region of Human TMEM190
Sequence:	SVSLLSKHRG TKKTPSTGSV PVALSKESRD VEGGTEGEGT EEGEETEGEE
Predicted Reactivity:	Human: 100%
Characteristics:	This is a rabbit polyclonal antibody against TMEM190. It was validated on Western Blot.
Purification:	Affinity Purified

Target Details

Target:	TMEM190
Alternative Name:	TMEM190 (TMEM190 Products)

Target Details

Background: The function of this protein remains unknown.
Alias Symbols: MDAC1
Protein Interaction Partner: LDLRAD1, KRTAP2-4, CD69,
Protein Size: 177

Molecular Weight: 19 kDa

Gene ID: 147744

NCBI Accession: [NM_139172](#), [NP_631911](#)

UniProt: [Q8WZ59](#)

Application Details

Application Notes: Optimal working dilutions should be determined experimentally by the investigator.

Comment: Antigen size: 177 AA

Restrictions: For Research Use only

Handling

Format: Liquid

Concentration: Lot specific

Buffer: Liquid. Purified antibody supplied in 1x PBS buffer with 0.09 % (w/v) sodium azide and 2 % sucrose.

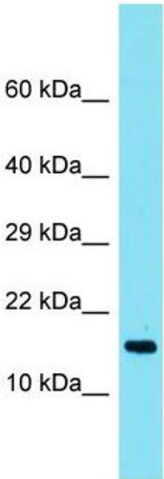
Preservative: Sodium azide

Precaution of Use: This product contains Sodium azide: a POISONOUS AND HAZARDOUS SUBSTANCE which should be handled by trained staff only.

Handling Advice: Avoid repeated freeze-thaw cycles.

Storage: -20 °C

Storage Comment: For short term use, store at 2-8°C up to 1 week. For long term storage, store at -20°C in small aliquots to prevent freeze-thaw cycles.



Western Blotting

Image 1. Host: Rabbit Target Name: TMEM190 Sample Type: Fetal Heart lysates Antibody Dilution: 1.0ug/ml