

Datasheet for ABIN2791353
anti-OR6Q1 antibody (C-Term)[Go to Product page](#)

1 Image

Overview

Quantity:	100 µL
Target:	OR6Q1
Binding Specificity:	C-Term
Reactivity:	Human, Cow, Dog, Guinea Pig, Horse, Mouse, Rabbit, Rat
Host:	Rabbit
Clonality:	Polyclonal
Conjugate:	This OR6Q1 antibody is un-conjugated
Application:	Western Blotting (WB)

Product Details

Immunogen:	The immunogen is a synthetic peptide directed towards the C-terminal region of Human OR6Q1
Sequence:	FFMYVQTKVT SSINFNKVVS VFYSVVTPLM NPLIYSLRNK EVKGALGRVF
Predicted Reactivity:	Cow: 100%, Dog: 100%, Guinea Pig: 100%, Horse: 100%, Human: 100%, Mouse: 100%, Rabbit: 100%, Rat: 100%
Characteristics:	This is a rabbit polyclonal antibody against OR6Q1. It was validated on Western Blot.
Purification:	Affinity Purified

Target Details

Target:	OR6Q1
Alternative Name:	OR6Q1 (OR6Q1 Products)

Target Details

Background:	<p>Olfactory receptors interact with odorant molecules in the nose, to initiate a neuronal response that triggers the perception of a smell. The olfactory receptor proteins are members of a large family of G-protein-coupled receptors (GPCR) arising from single coding-exon genes. Olfactory receptors share a 7-transmembrane domain structure with many neurotransmitter and hormone receptors and are responsible for the recognition and G protein-mediated transduction of odorant signals. The olfactory receptor gene family is the largest in the genome. The nomenclature assigned to the olfactory receptor genes and proteins for this organism is independent of other organisms.</p> <p>Alias Symbols: OR11-226</p> <p>Protein Size: 317</p>
Molecular Weight:	35 kDa
Gene ID:	219952
NCBI Accession:	NM_001005186 , NP_001005186
UniProt:	Q8NGQ2

Application Details

Application Notes:	Optimal working dilutions should be determined experimentally by the investigator.
Comment:	Antigen size: 317 AA
Restrictions:	For Research Use only

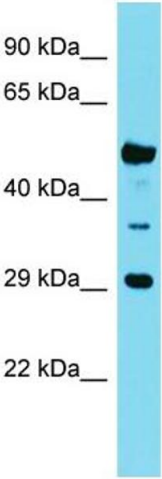
Handling

Format:	Liquid
Concentration:	Lot specific
Buffer:	Liquid. Purified antibody supplied in 1x PBS buffer with 0.09 % (w/v) sodium azide and 2 % sucrose.
Preservative:	Sodium azide
Precaution of Use:	This product contains Sodium azide: a POISONOUS AND HAZARDOUS SUBSTANCE which should be handled by trained staff only.
Handling Advice:	Avoid repeated freeze-thaw cycles.
Storage:	-20 °C

Handling

Storage Comment: For short term use, store at 2-8°C up to 1 week. For long term storage, store at -20°C in small aliquots to prevent freeze-thaw cycles.

Images



Western Blotting

Image 1. Host: Rabbit Target Name: OR6Q1 Sample Type: Fetal Kidney lysates Antibody Dilution: 1.0ug/ml