

Datasheet for ABIN2791359
anti-PPP1R35 antibody (N-Term)[Go to Product page](#)

1 Image

Overview

Quantity:	100 µL
Target:	PPP1R35
Binding Specificity:	N-Term
Reactivity:	Human, Rabbit
Host:	Rabbit
Clonality:	Polyclonal
Conjugate:	This PPP1R35 antibody is un-conjugated
Application:	Western Blotting (WB)

Product Details

Immunogen:	The immunogen is a synthetic peptide directed towards the N-terminal region of Human PPP1R35
Sequence:	AAAVPGPPPE PQVQLRAPV PEPGLDLSLS PRPDSPQPRH GSPGRRKGRA
Predicted Reactivity:	Human: 100%, Rabbit: 79%
Characteristics:	This is a rabbit polyclonal antibody against PPP1R35. It was validated on Western Blot.
Purification:	Affinity Purified

Target Details

Target:	PPP1R35
Alternative Name:	PPP1R35 (PPP1R35 Products)

Target Details

Background: PPP1R35 inhibits PPP1CA phosphatase activity.
Alias Symbols: C7orf47
Protein Interaction Partner: PPP1CA, PPP1CC,
Protein Size: 253

Molecular Weight: 27 kDa

Gene ID: 221908

NCBI Accession: [NM_145030](#), [NP_659467](#)

UniProt: [Q8TAP8](#)

Application Details

Application Notes: Optimal working dilutions should be determined experimentally by the investigator.

Comment: Antigen size: 253 AA

Restrictions: For Research Use only

Handling

Format: Liquid

Concentration: Lot specific

Buffer: Liquid. Purified antibody supplied in 1x PBS buffer with 0.09 % (w/v) sodium azide and 2 % sucrose.

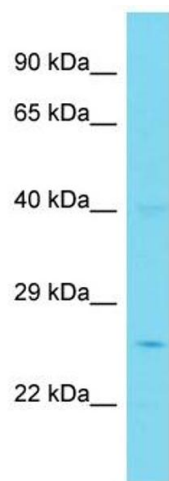
Preservative: Sodium azide

Precaution of Use: This product contains Sodium azide: a POISONOUS AND HAZARDOUS SUBSTANCE which should be handled by trained staff only.

Handling Advice: Avoid repeated freeze-thaw cycles.

Storage: -20 °C

Storage Comment: For short term use, store at 2-8°C up to 1 week. For long term storage, store at -20°C in small aliquots to prevent freeze-thaw cycles.



Western Blotting

Image 1. Host: Rabbit Target Name: PPP1R35 Sample Type: Jurkat Whole Cell lysates Antibody Dilution: 1.0ug/ml