

Datasheet for ABIN2791363
anti-CCDC75 antibody (N-Term)[Go to Product page](#)

1 Image

Overview

Quantity:	100 µL
Target:	CCDC75
Binding Specificity:	N-Term
Reactivity:	Human, Mouse, Rat, Cow, Guinea Pig, Horse, Rabbit, Dog
Host:	Rabbit
Clonality:	Polyclonal
Conjugate:	This CCDC75 antibody is un-conjugated
Application:	Western Blotting (WB)

Product Details

Immunogen:	The immunogen is a synthetic peptide directed towards the N-terminal region of Human CCDC75
Sequence:	DSFINVQEDI RPGLPMLRQI REARRKEEKQ QEANLKNRQK SLKEEEQERR
Predicted Reactivity:	Cow: 93%, Dog: 100%, Guinea Pig: 100%, Horse: 100%, Human: 100%, Mouse: 93%, Rabbit: 100%, Rat: 100%
Characteristics:	This is a rabbit polyclonal antibody against CCDC75. It was validated on Western Blot.
Purification:	Affinity Purified

Target Details

Target:	CCDC75
---------	--------

Target Details

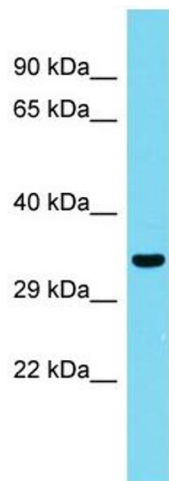
Alternative Name:	CCDC75 (CCDC75 Products)
Background:	<p>The function of this protein remains unknown.</p> <p>Alias Symbols: CENP-Y, CENPY, GPATCH11, CCDC75</p> <p>Protein Interaction Partner: SDCBP, BAI3, UBC, Sf3a1,</p> <p>Protein Size: 259</p>
Molecular Weight:	30 kDa
Gene ID:	253635
NCBI Accession:	NM_174931 , NP_777591
UniProt:	Q8N954

Application Details

Application Notes:	Optimal working dilutions should be determined experimentally by the investigator.
Comment:	Antigen size: 259 AA
Restrictions:	For Research Use only

Handling

Format:	Liquid
Concentration:	Lot specific
Buffer:	Liquid. Purified antibody supplied in 1x PBS buffer with 0.09 % (w/v) sodium azide and 2 % sucrose.
Preservative:	Sodium azide
Precaution of Use:	This product contains Sodium azide: a POISONOUS AND HAZARDOUS SUBSTANCE which should be handled by trained staff only.
Handling Advice:	Avoid repeated freeze-thaw cycles.
Storage:	-20 °C
Storage Comment:	For short term use, store at 2-8°C up to 1 week. For long term storage, store at -20°C in small aliquots to prevent freeze-thaw cycles.



Western Blotting

Image 1. Host: Rabbit Target Name: CCDC75 Sample Type: Fetal Kidney lysates Antibody Dilution: 1.0ug/ml