

Datasheet for ABIN2791371
anti-SERPINA11 antibody (Middle Region)[Go to Product page](#)

1 Image

Overview

Quantity:	100 µL
Target:	SERPINA11
Binding Specificity:	Middle Region
Reactivity:	Human, Mouse, Rat, Cow, Dog, Guinea Pig, Horse, Pig, Rabbit
Host:	Rabbit
Clonality:	Polyclonal
Conjugate:	This SERPINA11 antibody is un-conjugated
Application:	Western Blotting (WB)

Product Details

Immunogen:	The immunogen is a synthetic peptide directed towards the middle region of Human SERPINA11
Sequence:	TFMVLANYIF FKAKWKHPFS RYQTQKQESF FVDERTSLQV PMMHQKEMHR
Predicted Reactivity:	Cow: 93%, Dog: 100%, Guinea Pig: 83%, Horse: 93%, Human: 100%, Mouse: 86%, Pig: 86%, Rabbit: 79%, Rat: 86%
Characteristics:	This is a rabbit polyclonal antibody against SERPINA11. It was validated on Western Blot.
Purification:	Affinity Purified

Target Details

Target:	SERPINA11
---------	-----------

Target Details

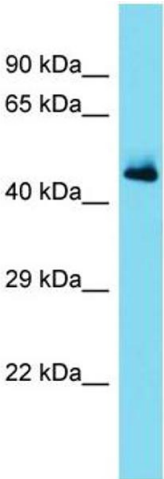
Alternative Name:	SERPINA11 (SERPINA11 Products)
Background:	The function of this protein remains unknown. Alias Symbols: - Protein Size: 422
Molecular Weight:	47 kDa
Gene ID:	256394
NCBI Accession:	NM_001080451 , NP_001073920
UniProt:	Q86U17

Application Details

Application Notes:	Optimal working dilutions should be determined experimentally by the investigator.
Comment:	Antigen size: 422 AA
Restrictions:	For Research Use only

Handling

Format:	Liquid
Concentration:	Lot specific
Buffer:	Liquid. Purified antibody supplied in 1x PBS buffer with 0.09 % (w/v) sodium azide and 2 % sucrose.
Preservative:	Sodium azide
Precaution of Use:	This product contains Sodium azide: a POISONOUS AND HAZARDOUS SUBSTANCE which should be handled by trained staff only.
Handling Advice:	Avoid repeated freeze-thaw cycles.
Storage:	-20 °C
Storage Comment:	For short term use, store at 2-8°C up to 1 week. For long term storage, store at -20°C in small aliquots to prevent freeze-thaw cycles.



Western Blotting

Image 1. Host: Rabbit Target Name: SERPINA11 Sample Type: Fetal Heart lysates Antibody Dilution: 1.0ug/ml