

Datasheet for ABIN2791373
anti-TAS2R45 antibody (C-Term)



[Go to Product page](#)

1 Image

Overview

Quantity:	100 µL
Target:	TAS2R45
Binding Specificity:	C-Term
Reactivity:	Human, Cow, Guinea Pig, Horse
Host:	Rabbit
Clonality:	Polyclonal
Conjugate:	This TAS2R45 antibody is un-conjugated
Application:	Western Blotting (WB)

Product Details

Immunogen:	The immunogen is a synthetic peptide directed towards the C-terminal region of human TAS2R43
Sequence:	MLANLVPFTV TLISFLLLVC SLCKHLKKMQ LHGKGSQDPS TKVHIKVLQT
Predicted Reactivity:	Cow: 86%, Guinea Pig: 83%, Horse: 86%, Human: 100%
Characteristics:	This is a rabbit polyclonal antibody against TAS2R45. It was validated on Western Blot.
Purification:	Affinity Purified

Target Details

Target:	TAS2R45
Alternative Name:	TAS2R45 (TAS2R45 Products)

Target Details

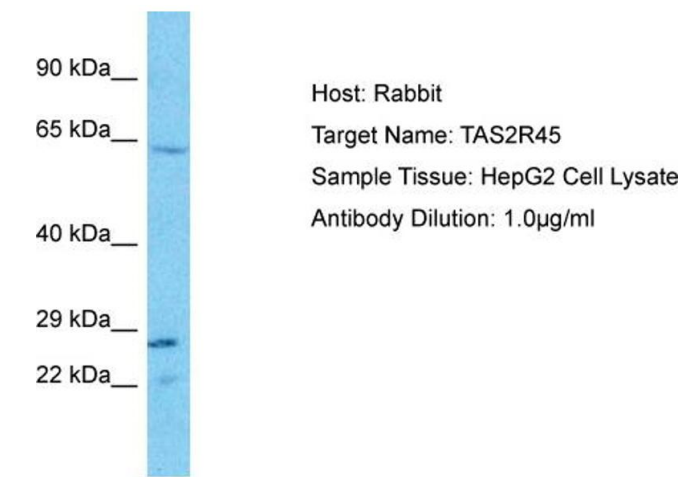
Background:	TAS2R43 belongs to the large TAS2R receptor family. TAS2Rs are expressed on the surface of taste receptor cells and mediate the perception of bitterness through a G protein-coupled second messenger pathway (Conte et al., 2002 [PubMed 12584440]). For further information on TAS2Rs, see MIM 604791.[supplied by OMIM, Mar 2009] Alias Symbols: T2R43, T2R52 Protein Size: 299
Molecular Weight:	32 kDa
Gene ID:	259289
NCBI Accession:	NM_176884 , NP_795365
UniProt:	P59537

Application Details

Application Notes:	Optimal working dilution should be determined by the investigator.
Restrictions:	For Research Use only

Handling

Format:	Liquid
Concentration:	1 mg/mL
Buffer:	Liquid. Purified antibody supplied in 1x PBS buffer with 0.09 % (w/v) sodium azide and 2 % sucrose.
Preservative:	Sodium azide
Precaution of Use:	This product contains Sodium azide: a POISONOUS AND HAZARDOUS SUBSTANCE which should be handled by trained staff only.
Handling Advice:	Avoid repeat freeze-thaw cycles.
Storage:	-20 °C
Storage Comment:	For short term use, store at 2-8°C up to 1 week. For long term storage, store at -20°C in small aliquots to prevent freeze-thaw cycles.



Western Blotting

Image 1. Host: Rabbit Target Name: TAS2R45 Sample Type: HepG2 Whole Cell lysates Antibody Dilution: 1.0ug/ml