



[Go to Product page](#)

Datasheet for ABIN2791382  
**anti-CCSMST1 antibody (C-Term)**

1 Image

Overview

Quantity:	100 µL
Target:	CCSMST1 (C16ORF91)
Binding Specificity:	C-Term
Reactivity:	Human
Host:	Rabbit
Clonality:	Polyclonal
Conjugate:	This CCSMST1 antibody is un-conjugated
Application:	Western Blotting (WB)

Product Details

Immunogen:	The immunogen is a synthetic peptide directed towards the C-terminal region of Human C16orf91
Sequence:	DCPGYACVLS TEGLGWWMGH LAMLIRVKAE QNLSRSETAP RLALDVQGFH
Characteristics:	This is a rabbit polyclonal antibody against C16orf91. It was validated on Western Blot.
Purification:	Affinity Purified

Target Details

Target:	CCSMST1 (C16ORF91)
Alternative Name:	C16orf91 ( <a href="#">C16ORF91 Products</a> )
Background:	The function of this protein remains unknown.

## Target Details

---

Alias Symbols: CCSMST1, gs103

Protein Size: 356

Molecular Weight: 38 kDa

Gene ID: 283951

NCBI Accession: [NM\\_001010878](#), [NP\\_001010878](#)

## Application Details

---

Application Notes: Optimal working dilutions should be determined experimentally by the investigator.

Comment: Antigen size: 356 AA

Restrictions: For Research Use only

## Handling

---

Format: Liquid

Concentration: Lot specific

Buffer: Liquid. Purified antibody supplied in 1x PBS buffer with 0.09 % (w/v) sodium azide and 2 % sucrose.

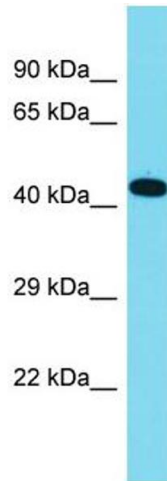
Preservative: Sodium azide

Precaution of Use: This product contains Sodium azide: a POISONOUS AND HAZARDOUS SUBSTANCE which should be handled by trained staff only.

Handling Advice: Avoid repeated freeze-thaw cycles.

Storage: -20 °C

Storage Comment: For short term use, store at 2-8°C up to 1 week. For long term storage, store at -20°C in small aliquots to prevent freeze-thaw cycles.



### Western Blotting

**Image 1.** Host: Rabbit Target Name: C16orf91 Sample Type: Fetal Lung lysates Antibody Dilution: 1.0ug/ml