

Datasheet for ABIN2791385  
**anti-METRNL antibody (C-Term)**[Go to Product page](#)

## 1 Image

## Overview

Quantity:	100 µL
Target:	METRNL
Binding Specificity:	C-Term
Reactivity:	Human, Mouse, Rat, Cow, Dog, Guinea Pig, Horse, Rabbit, Saccharomyces cerevisiae
Host:	Rabbit
Clonality:	Polyclonal
Conjugate:	This METRNL antibody is un-conjugated
Application:	Western Blotting (WB)

## Product Details

Immunogen:	The immunogen is a synthetic peptide directed towards the C-terminal region of Human METRNL
Sequence:	GVRPGHGDFL FTGHMHFGEA RLGCAPRFKD FQRMYRDAQE RGLNPCEVGT
Predicted Reactivity:	Cow: 93%, Dog: 86%, Guinea Pig: 92%, Horse: 92%, Human: 100%, Mouse: 77%, Rabbit: 86%, Rat: 92%, Yeast: 90%
Characteristics:	This is a rabbit polyclonal antibody against METRNL. It was validated on Western Blot.
Purification:	Affinity Purified

## Target Details

Target:	METRNL
---------	--------

## Target Details

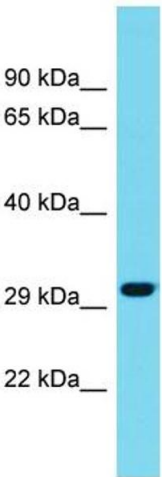
Alternative Name:	METRNL ( <a href="#">METRNL Products</a> )
Background:	The function of this protein remains unknown. Alias Symbols: - Protein Size: 311
Molecular Weight:	29 kDa
Gene ID:	284207
NCBI Accession:	<a href="#">NM_001004431</a> , <a href="#">NP_001004431</a>
UniProt:	<a href="#">Q641Q3</a>

## Application Details

Application Notes:	Optimal working dilutions should be determined experimentally by the investigator.
Comment:	Antigen size: 311 AA
Restrictions:	For Research Use only

## Handling

Format:	Liquid
Concentration:	Lot specific
Buffer:	Liquid. Purified antibody supplied in 1x PBS buffer with 0.09 % (w/v) sodium azide and 2 % sucrose.
Preservative:	Sodium azide
Precaution of Use:	This product contains Sodium azide: a POISONOUS AND HAZARDOUS SUBSTANCE which should be handled by trained staff only.
Handling Advice:	Avoid repeated freeze-thaw cycles.
Storage:	-20 °C
Storage Comment:	For short term use, store at 2-8°C up to 1 week. For long term storage, store at -20°C in small aliquots to prevent freeze-thaw cycles.



Western Blotting

**Image 1.** Host: Rabbit Target Name: METRNL Sample Type: Fetal Liver lysates Antibody Dilution: 1.0ug/ml