

Datasheet for ABIN2791387
anti-SIGLECL1 antibody (C-Term)[Go to Product page](#)

1 Image

Overview

Quantity:	100 µL
Target:	SIGLECL1
Binding Specificity:	C-Term
Reactivity:	Human, Saccharomyces cerevisiae
Host:	Rabbit
Clonality:	Polyclonal
Conjugate:	This SIGLECL1 antibody is un-conjugated
Application:	Western Blotting (WB)

Product Details

Immunogen:	The immunogen is a synthetic peptide directed towards the C-terminal region of Human SIGLECL1
Sequence:	RKKQAKKAAA IRAKKSSKVR ASQELEMSLK PEEPGKPVVA TFESRILEK
Predicted Reactivity:	Human: 100%, Yeast: 83%
Characteristics:	This is a rabbit polyclonal antibody against SIGLECL1. It was validated on Western Blot.
Purification:	Affinity Purified

Target Details

Target:	SIGLECL1
Alternative Name:	SIGLECL1 (SIGLECL1 Products)

Target Details

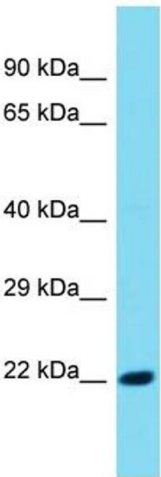
Background:	The function of this protein remains unknown. Alias Symbols: C19orf75 Protein Size: 197
Molecular Weight:	21 kDa
Gene ID:	284369
NCBI Accession:	NM_173635 , NP_775906
UniProt:	Q8N7X8

Application Details

Application Notes:	Optimal working dilutions should be determined experimentally by the investigator.
Comment:	Antigen size: 197 AA
Restrictions:	For Research Use only

Handling

Format:	Liquid
Concentration:	Lot specific
Buffer:	Liquid. Purified antibody supplied in 1x PBS buffer with 0.09 % (w/v) sodium azide and 2 % sucrose.
Preservative:	Sodium azide
Precaution of Use:	This product contains Sodium azide: a POISONOUS AND HAZARDOUS SUBSTANCE which should be handled by trained staff only.
Handling Advice:	Avoid repeated freeze-thaw cycles.
Storage:	-20 °C
Storage Comment:	For short term use, store at 2-8°C up to 1 week. For long term storage, store at -20°C in small aliquots to prevent freeze-thaw cycles.



Western Blotting

Image 1. Host: Rabbit Target Name: SIGLECL1 Sample Type: Fetal Kidney lysates Antibody Dilution: 1.0ug/ml