

Datasheet for ABIN2791388
anti-CCDC141 antibody (Middle Region)



[Go to Product page](#)

1 Image

Overview

Quantity:	100 µL
Target:	CCDC141
Binding Specificity:	Middle Region
Reactivity:	Human, Mouse, Horse, Pig, Rabbit, Cow, Dog, Guinea Pig
Host:	Rabbit
Clonality:	Polyclonal
Conjugate:	This CCDC141 antibody is un-conjugated
Application:	Western Blotting (WB)

Product Details

Immunogen:	The immunogen is a synthetic peptide directed towards the middle region of Human CCDC141
Sequence:	ILDVKNEVYL MKNTMENQKA EREELSLRL AWQLKATESK PGKQQWAAFK
Predicted Reactivity:	Cow: 92%, Dog: 85%, Guinea Pig: 83%, Horse: 92%, Human: 100%, Mouse: 75%, Pig: 92%, Rabbit: 92%
Characteristics:	This is a rabbit polyclonal antibody against CCDC141. It was validated on Western Blot.
Purification:	Affinity Purified

Target Details

Target:	CCDC141
Alternative Name:	CCDC141 (CCDC141 Products)

Target Details

Background: The function of this protein remains unknown.
Alias Symbols: CAMDI
Protein Interaction Partner: UBC, DISC1,
Protein Size: 1530

Molecular Weight: 174 kDa

Gene ID: 285025

NCBI Accession: [NM_173648](#), [NP_775919](#)

UniProt: [H7C0P1](#)

Application Details

Application Notes: Optimal working dilutions should be determined experimentally by the investigator.

Comment: Antigen size: 1530 AA

Restrictions: For Research Use only

Handling

Format: Liquid

Concentration: Lot specific

Buffer: Liquid. Purified antibody supplied in 1x PBS buffer with 0.09 % (w/v) sodium azide and 2 % sucrose.

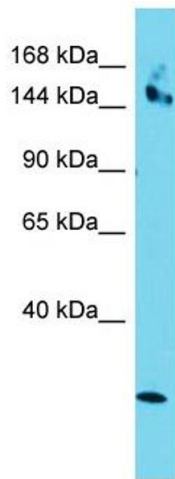
Preservative: Sodium azide

Precaution of Use: This product contains Sodium azide: a POISONOUS AND HAZARDOUS SUBSTANCE which should be handled by trained staff only.

Handling Advice: Avoid repeated freeze-thaw cycles.

Storage: -20 °C

Storage Comment: For short term use, store at 2-8°C up to 1 week. For long term storage, store at -20°C in small aliquots to prevent freeze-thaw cycles.



Western Blotting

Image 1. Host: Rabbit Target Name: CCDC141 Sample Type: HepG2 Whole Cell lysates Antibody Dilution: 1.0ug/ml