

Datasheet for ABIN2791389
anti-CXXC11 antibody (C-Term)[Go to Product page](#)

1 Image

Overview

Quantity:	100 µL
Target:	CXXC11
Binding Specificity:	C-Term
Reactivity:	Human
Host:	Rabbit
Clonality:	Polyclonal
Conjugate:	This CXXC11 antibody is un-conjugated
Application:	Western Blotting (WB)

Product Details

Immunogen:	The immunogen is a synthetic peptide directed towards the C-terminal region of Human CXXC11
Sequence:	AFTDITEGKE KEGGLVTAGH DAPLEANAEG PITVSEGCIT IPFAVFDVIK
Predicted Reactivity:	Human: 100%
Characteristics:	This is a rabbit polyclonal antibody against CXXC11. It was validated on Western Blot.
Purification:	Affinity Purified

Target Details

Target:	CXXC11
Alternative Name:	CXXC11 (CXXC11 Products)

Target Details

Background: The function of this protein remains unknown.

Alias Symbols: C2orf85

Protein Interaction Partner: SPERT, MIPOL1, KRT40, LZTS2, DOCK8, TSGA10, BEND5, CARD9, RINT1, SPDL1, ROPN1, MTUS2, RBPMS, PNMA2, CALCOCO2, PDE4DIP, PNMA1, PSTPIP1, TRAF1, SP100, PSMA6, PSMA3, MDFI, HNRNPK, GOLGA2, TRIM23, ACTN2,

Protein Size: 572

Molecular Weight: 60 kDa

Gene ID: 285093

NCBI Accession: [NM_173821](#), [NP_776182](#)

UniProt: [Q14D33](#)

Application Details

Application Notes: Optimal working dilutions should be determined experimentally by the investigator.

Comment: Antigen size: 572 AA

Restrictions: For Research Use only

Handling

Format: Liquid

Concentration: Lot specific

Buffer: Liquid. Purified antibody supplied in 1x PBS buffer with 0.09 % (w/v) sodium azide and 2 % sucrose.

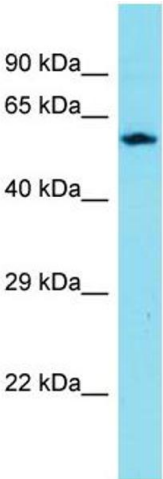
Preservative: Sodium azide

Precaution of Use: This product contains Sodium azide: a POISONOUS AND HAZARDOUS SUBSTANCE which should be handled by trained staff only.

Handling Advice: Avoid repeated freeze-thaw cycles.

Storage: -20 °C

Storage Comment: For short term use, store at 2-8°C up to 1 week. For long term storage, store at -20°C in small aliquots to prevent freeze-thaw cycles.



Western Blotting

Image 1. Host: Rabbit Target Name: CXXC11 Sample Type: ACHN Whole cell lysates Antibody Dilution: 1.0ug/ml