



[Go to Product page](#)

Datasheet for ABIN2791394

anti-CCDC137 antibody (N-Term)

1 Image

Overview

Quantity:	100 µL
Target:	CCDC137
Binding Specificity:	N-Term
Reactivity:	Human, Rat, Cow, Dog, Guinea Pig, Mouse
Host:	Rabbit
Clonality:	Polyclonal
Conjugate:	This CCDC137 antibody is un-conjugated
Application:	Western Blotting (WB)

Product Details

Immunogen:	The immunogen is a synthetic peptide directed towards the N-terminal region of Human CCDC137
Sequence:	RRARGRQQVQ PLGKQRPAPW PGLRSKEKKK VNCKPKNQDE QEIPFRLREI
Predicted Reactivity:	Cow: 100%, Dog: 100%, Guinea Pig: 100%, Human: 100%, Mouse: 100%, Rat: 100%
Characteristics:	This is a rabbit polyclonal antibody against CCDC137. It was validated on Western Blot.
Purification:	Affinity Purified

Target Details

Target:	CCDC137
Alternative Name:	CCDC137 (CCDC137 Products)

Target Details

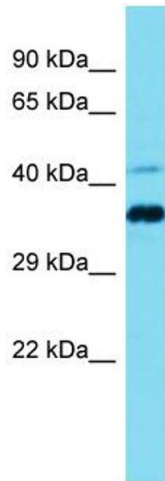
Background:	The function of this protein remains unknown. Alias Symbols: - Protein Interaction Partner: UBC, SRPK3, TERF2, ATP5J2, MPP3, Protein Size: 289
Molecular Weight:	33 kDa
Gene ID:	339230
NCBI Accession:	NM_199287 , NP_954981
UniProt:	Q6PK04

Application Details

Application Notes:	Optimal working dilutions should be determined experimentally by the investigator.
Comment:	Antigen size: 289 AA
Restrictions:	For Research Use only

Handling

Format:	Liquid
Concentration:	Lot specific
Buffer:	Liquid. Purified antibody supplied in 1x PBS buffer with 0.09 % (w/v) sodium azide and 2 % sucrose.
Preservative:	Sodium azide
Precaution of Use:	This product contains Sodium azide: a POISONOUS AND HAZARDOUS SUBSTANCE which should be handled by trained staff only.
Handling Advice:	Avoid repeated freeze-thaw cycles.
Storage:	-20 °C
Storage Comment:	For short term use, store at 2-8°C up to 1 week. For long term storage, store at -20°C in small aliquots to prevent freeze-thaw cycles.



Western Blotting

Image 1. Host: Rabbit Target Name: CCDC137 Sample Type: Jurkat Whole Cell lysates Antibody Dilution: 1.0ug/ml