

Datasheet for ABIN2791396  
**anti-C1ORF228 antibody (N-Term)**



[Go to Product page](#)

1 Image

## Overview

Quantity:	100 µL
Target:	C1ORF228
Binding Specificity:	N-Term
Reactivity:	Human, Cow, Dog, Guinea Pig, Horse, Mouse, Rabbit, Rat
Host:	Rabbit
Clonality:	Polyclonal
Conjugate:	This C1ORF228 antibody is un-conjugated
Application:	Western Blotting (WB)

## Product Details

Immunogen:	The immunogen is a synthetic peptide directed towards the N-terminal region of Human C1orf228
Sequence:	LSAVSSNRYL IEFLEVGGVL TLLEILGLEK IKEEAKKESV KLLQVIANS
Predicted Reactivity:	Cow: 79%, Dog: 77%, Guinea Pig: 79%, Horse: 86%, Human: 100%, Mouse: 77%, Rabbit: 79%, Rat: 86%
Characteristics:	This is a rabbit polyclonal antibody against C1orf228. It was validated on Western Blot.
Purification:	Affinity Purified

## Target Details

Target:	C1ORF228
---------	----------

## Target Details

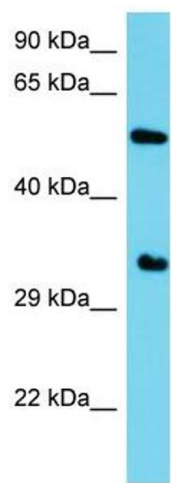
Alternative Name:	C1orf228 ( <a href="#">C1ORF228 Products</a> )
Background:	The function of this protein remains unknown. Alias Symbols: NCRNA00082, p40 Protein Size: 440
Molecular Weight:	48 kDa
Gene ID:	339541
NCBI Accession:	<a href="#">NM_001145636</a> , <a href="#">NP_001139108</a>
UniProt:	<a href="#">Q6PIY5</a>

## Application Details

Application Notes:	Optimal working dilutions should be determined experimentally by the investigator.
Comment:	Antigen size: 440 AA
Restrictions:	For Research Use only

## Handling

Format:	Liquid
Concentration:	Lot specific
Buffer:	Liquid. Purified antibody supplied in 1x PBS buffer with 0.09 % (w/v) sodium azide and 2 % sucrose.
Preservative:	Sodium azide
Precaution of Use:	This product contains Sodium azide: a POISONOUS AND HAZARDOUS SUBSTANCE which should be handled by trained staff only.
Handling Advice:	Avoid repeated freeze-thaw cycles.
Storage:	-20 °C
Storage Comment:	For short term use, store at 2-8°C up to 1 week. For long term storage, store at -20°C in small aliquots to prevent freeze-thaw cycles.



Western Blotting

**Image 1.** Host: Rabbit Target Name: C1orf228 Sample Type: HepG2 Whole Cell lysates Antibody Dilution: 1.0ug/ml