

Datasheet for ABIN2791399
anti-SLC35F4 antibody (C-Term)[Go to Product page](#)

1 Image

Overview

Quantity:	100 µL
Target:	SLC35F4
Binding Specificity:	C-Term
Reactivity:	Human, Cow, Dog, Guinea Pig, Horse, Mouse, Pig, Rabbit, Rat
Host:	Rabbit
Clonality:	Polyclonal
Conjugate:	This SLC35F4 antibody is un-conjugated
Application:	Western Blotting (WB)

Product Details

Immunogen:	The immunogen is a synthetic peptide directed towards the C-terminal region of Human SLC35F4
Sequence:	LLMLLPEEWD EITLRFINSL KEKKSEEHVD DVTDPSTHLR GRGRANGTVS
Predicted Reactivity:	Cow: 93%, Dog: 86%, Guinea Pig: 79%, Horse: 86%, Human: 100%, Mouse: 86%, Pig: 93%, Rabbit: 93%, Rat: 86%
Characteristics:	This is a rabbit polyclonal antibody against SLC35F4. It was validated on Western Blot.
Purification:	Affinity Purified

Target Details

Target:	SLC35F4
---------	---------

Target Details

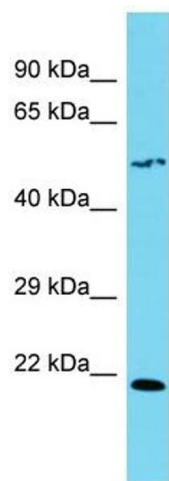
Alternative Name:	SLC35F4 (SLC35F4 Products)
Background:	The function of this protein remains unknown. Alias Symbols: C14orf36, c14_5373 Protein Size: 484
Molecular Weight:	53 kDa
Gene ID:	341880
NCBI Accession:	NM_001206920 , NP_001193849

Application Details

Application Notes:	Optimal working dilutions should be determined experimentally by the investigator.
Comment:	Antigen size: 484 AA
Restrictions:	For Research Use only

Handling

Format:	Liquid
Concentration:	Lot specific
Buffer:	Liquid. Purified antibody supplied in 1x PBS buffer with 0.09 % (w/v) sodium azide and 2 % sucrose.
Preservative:	Sodium azide
Precaution of Use:	This product contains Sodium azide: a POISONOUS AND HAZARDOUS SUBSTANCE which should be handled by trained staff only.
Handling Advice:	Avoid repeated freeze-thaw cycles.
Storage:	-20 °C
Storage Comment:	For short term use, store at 2-8°C up to 1 week. For long term storage, store at -20°C in small aliquots to prevent freeze-thaw cycles.



Western Blotting

Image 1. Host: Rabbit Target Name: SLC35F4 Sample Type: 293T Whole Cell lysates Antibody Dilution: 1.0ug/ml