

Datasheet for ABIN2791408
anti-DNAAF3 antibody (C-Term)



[Go to Product page](#)

1 Image

Overview

Quantity:	100 µL
Target:	DNAAF3
Binding Specificity:	C-Term
Reactivity:	Human
Host:	Rabbit
Clonality:	Polyclonal
Conjugate:	This DNAAF3 antibody is un-conjugated
Application:	Western Blotting (WB)

Product Details

Immunogen:	The immunogen is a synthetic peptide directed towards the C-terminal region of Human DNAAF3
Sequence:	GLTQPLQGGT PHCEPCQLPS ESPGSLSEVL AQPQGALAPP NCESDSKTGV
Predicted Reactivity:	Human: 100%
Characteristics:	This is a rabbit polyclonal antibody against DNAAF3. It was validated on Western Blot.
Purification:	Affinity Purified

Target Details

Target:	DNAAF3
Alternative Name:	DNAAF3 (DNAAF3 Products)

Target Details

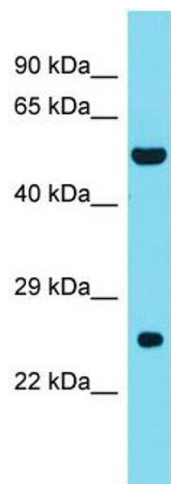
Background:	<p>The protein encoded by this gene is required for the assembly of axonemal inner and outer dynein arms and plays a role in assembling dynein complexes for transport into cilia. Defects in this gene are a cause of primary ciliary dyskinesia type 2 (CILD2). Several transcript variants encoding different isoforms have been found for this gene.</p> <p>Alias Symbols: C19orf51, CILD2, DAB1, PF22</p> <p>Protein Interaction Partner: UBC,</p> <p>Protein Size: 487</p>
Molecular Weight:	53 kDa
Gene ID:	352909
NCBI Accession:	NM_001256716 , NP_001243645

Application Details

Application Notes:	Optimal working dilutions should be determined experimentally by the investigator.
Comment:	Antigen size: 487 AA
Restrictions:	For Research Use only

Handling

Format:	Liquid
Concentration:	Lot specific
Buffer:	Liquid. Purified antibody supplied in 1x PBS buffer with 0.09 % (w/v) sodium azide and 2 % sucrose.
Preservative:	Sodium azide
Precaution of Use:	This product contains Sodium azide: a POISONOUS AND HAZARDOUS SUBSTANCE which should be handled by trained staff only.
Handling Advice:	Avoid repeated freeze-thaw cycles.
Storage:	-20 °C
Storage Comment:	For short term use, store at 2-8°C up to 1 week. For long term storage, store at -20°C in small aliquots to prevent freeze-thaw cycles.



Western Blotting

Image 1. Host: Rabbit Target Name: DNAAF3 Sample Type: Fetal Liver lysates Antibody Dilution: 1.0ug/ml