

Datasheet for ABIN2791415
anti-C6ORF120 antibody (C-Term)



[Go to Product page](#)

1 Image

Overview

Quantity:	100 µL
Target:	C6ORF120
Binding Specificity:	C-Term
Reactivity:	Human, Rat, Cow
Host:	Rabbit
Clonality:	Polyclonal
Conjugate:	This C6ORF120 antibody is un-conjugated
Application:	Western Blotting (WB)

Product Details

Immunogen:	The immunogen is a synthetic peptide directed towards the C-terminal region of Human C6orf120
Sequence:	KVYYDGTVEQ HPFGAAAYPA DGADAGQKHA GAPEDASQEE ESVLWTLIS
Predicted Reactivity:	Cow: 92%, Human: 100%, Rat: 86%
Characteristics:	This is a rabbit polyclonal antibody against C6orf120. It was validated on Western Blot.
Purification:	Affinity Purified

Target Details

Target:	C6ORF120
Alternative Name:	C6orf120 (C6ORF120 Products)

Target Details

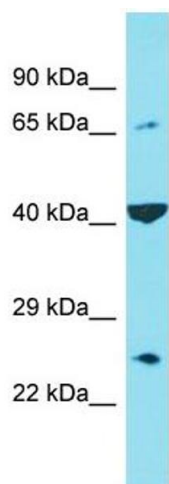
Background:	C6orf120 may be involved in induction of apoptosis in CD4+ T-cells, but not CD8+ T-cells or hepatocytes. Alias Symbols: bA160E12.4 Protein Size: 191
Molecular Weight:	21 kDa
Gene ID:	387263
NCBI Accession:	NM_001029863 , NP_001025034
UniProt:	Q7Z4R8

Application Details

Application Notes:	Optimal working dilutions should be determined experimentally by the investigator.
Comment:	Antigen size: 191 AA
Restrictions:	For Research Use only

Handling

Format:	Liquid
Concentration:	Lot specific
Buffer:	Liquid. Purified antibody supplied in 1x PBS buffer with 0.09 % (w/v) sodium azide and 2 % sucrose.
Preservative:	Sodium azide
Precaution of Use:	This product contains Sodium azide: a POISONOUS AND HAZARDOUS SUBSTANCE which should be handled by trained staff only.
Handling Advice:	Avoid repeated freeze-thaw cycles.
Storage:	-20 °C
Storage Comment:	For short term use, store at 2-8°C up to 1 week. For long term storage, store at -20°C in small aliquots to prevent freeze-thaw cycles.



Western Blotting

Image 1. Host: Rabbit Target Name: C6orf120 Sample Type: Hela Whole cell lysates Antibody Dilution: 1.0ug/ml