



[Go to Product page](#)

Datasheet for ABIN2791416

anti-SLC22A25 antibody (Middle Region)

1 Image

Overview

Quantity:	100 µL
Target:	SLC22A25
Binding Specificity:	Middle Region
Reactivity:	Human, Cow, Dog, Horse, Mouse, Pig, Rabbit, Rat
Host:	Rabbit
Clonality:	Polyclonal
Conjugate:	This SLC22A25 antibody is un-conjugated
Application:	Western Blotting (WB)

Product Details

Immunogen:	The immunogen is a synthetic peptide directed towards the middle region of Human SLC22A25
Sequence:	VFFLFSRWLA ESARWLIINN KPEEGLKELR KAAHRNGMKN AEDILTMEVL
Predicted Reactivity:	Cow: 85%, Dog: 92%, Horse: 92%, Human: 100%, Mouse: 83%, Pig: 100%, Rabbit: 93%, Rat: 83%
Characteristics:	This is a rabbit polyclonal antibody against SLC22A25. It was validated on Western Blot.
Purification:	Affinity Purified

Target Details

Target:	SLC22A25
Alternative Name:	SLC22A25 (SLC22A25 Products)
Background:	The function of this protein remains unknown.

Target Details

Alias Symbols: HIMTP, UST6

Protein Size: 547

Molecular Weight: 61 kDa

Gene ID: 387601

NCBI Accession: [NM_199352](#), [NP_955384](#)

UniProt: [Q6T423](#)

Application Details

Application Notes: Optimal working dilution should be determined by the investigator.

Restrictions: For Research Use only

Handling

Format: Liquid

Concentration: 1 mg/mL

Buffer: Liquid. Purified antibody supplied in 1x PBS buffer with 0.09 % (w/v) sodium azide and 2 % sucrose.

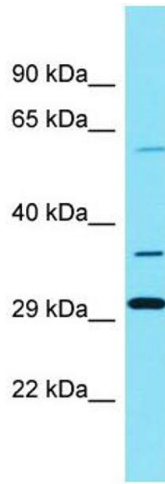
Preservative: Sodium azide

Precaution of Use: This product contains Sodium azide: a POISONOUS AND HAZARDOUS SUBSTANCE which should be handled by trained staff only.

Handling Advice: Avoid repeat freeze-thaw cycles.

Storage: -20 °C

Storage Comment: For short term use, store at 2-8°C up to 1 week. For long term storage, store at -20°C in small aliquots to prevent freeze-thaw cycles.



Western Blotting

Image 1. Host: Rabbit Target Name: SLC22A25 Sample Type: PANC1 Whole Cell lysates Antibody Dilution: 1.0ug/ml