

Datasheet for ABIN2791418  
**anti-TEX36 antibody (Middle Region)**[Go to Product page](#)

## 1 Image

## Overview

Quantity:	100 µL
Target:	TEX36
Binding Specificity:	Middle Region
Reactivity:	Rabbit, Rat, Cow, Dog, Guinea Pig, Horse, Human
Host:	Rabbit
Clonality:	Polyclonal
Conjugate:	This TEX36 antibody is un-conjugated
Application:	Western Blotting (WB)

## Product Details

Immunogen:	The immunogen is a synthetic peptide directed towards the middle region of Human TEX36
Sequence:	GRKKISPDKR QHVS RNFN LW ACDYVP SCLD GFSNNQISYV YKEAMV VSSF
Predicted Reactivity:	Cow: 93%, Dog: 86%, Guinea Pig: 86%, Horse: 86%, Human: 100%, Rabbit: 100%, Rat: 93%
Characteristics:	This is a rabbit polyclonal antibody against TEX36. It was validated on Western Blot.
Purification:	Affinity Purified

## Target Details

Target:	TEX36
Alternative Name:	TEX36 ( <a href="#">TEX36 Products</a> )
Background:	The function of this protein remains unknown.

## Target Details

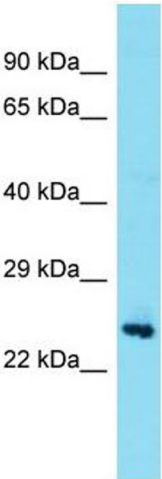
	Alias Symbols: bA383C5.1 Protein Interaction Partner: PPP1CC, Protein Size: 186
Molecular Weight:	21 kDa
Gene ID:	387718
NCBI Accession:	<a href="#">NM_001128202</a> , <a href="#">NP_001121674</a>
UniProt:	<a href="#">Q5VZQ5</a>

## Application Details

Application Notes:	Optimal working dilutions should be determined experimentally by the investigator.
Comment:	Antigen size: 186 AA
Restrictions:	For Research Use only

## Handling

Format:	Liquid
Concentration:	Lot specific
Buffer:	Liquid. Purified antibody supplied in 1x PBS buffer with 0.09 % (w/v) sodium azide and 2 % sucrose.
Preservative:	Sodium azide
Precaution of Use:	This product contains Sodium azide: a POISONOUS AND HAZARDOUS SUBSTANCE which should be handled by trained staff only.
Handling Advice:	Avoid repeated freeze-thaw cycles.
Storage:	-20 °C
Storage Comment:	For short term use, store at 2-8°C up to 1 week. For long term storage, store at -20°C in small aliquots to prevent freeze-thaw cycles.



Western Blotting

**Image 1.** Host: Rabbit Target Name: TEX36 Sample Type: Fetal Brain lysates Antibody Dilution: 1.0ug/ml