

Datasheet for ABIN2791427  
**anti-C8orf80 antibody (C-Term)**[Go to Product page](#)

## 1 Image

## Overview

Quantity:	100 µL
Target:	C8orf80 (NUGGC)
Binding Specificity:	C-Term
Reactivity:	Human, Cow, Dog, Horse, Pig, Rabbit
Host:	Rabbit
Clonality:	Polyclonal
Conjugate:	This C8orf80 antibody is un-conjugated
Application:	Western Blotting (WB)

## Product Details

Immunogen:	The immunogen is a synthetic peptide directed towards the C-terminal region of Human NUGGC
Sequence:	RSGWKYDSCK KNFLIQEISA ILGGLEDHIL RRKRRIYESL TASVQSDLKL
Predicted Reactivity:	Cow: 86%, Dog: 86%, Horse: 93%, Human: 100%, Pig: 86%, Rabbit: 79%
Characteristics:	This is a rabbit polyclonal antibody against NUGGC. It was validated on Western Blot.
Purification:	Affinity Purified

## Target Details

Target:	C8orf80 (NUGGC)
Alternative Name:	NUGGC ( <a href="#">NUGGC Products</a> )

## Target Details

Background: NUGGC plays a role as replication-related GTPase protein in germinal center B-cell.  
Alias Symbols: C8orf80, SLIP-GC  
Protein Size: 796

Molecular Weight: 91 kDa

Gene ID: 389643

NCBI Accession: [NM\\_001010906](#), [NP\\_001010906](#)

UniProt: [Q68CJ6](#)

## Application Details

Restrictions: For Research Use only

## Handling

Format: Liquid

Concentration: 1 mg/mL

Buffer: Liquid. Purified antibody supplied in 1x PBS buffer with 0.09 % (w/v) sodium azide and 2 % sucrose.

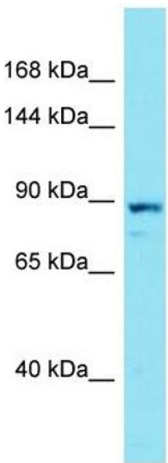
Preservative: Sodium azide

Precaution of Use: This product contains Sodium azide: a POISONOUS AND HAZARDOUS SUBSTANCE which should be handled by trained staff only.

Handling Advice: Avoid repeat freeze-thaw cycles.

Storage: -20 °C

Storage Comment: For short term use, store at 2-8°C up to 1 week. For long term storage, store at -20°C in small aliquots to prevent freeze-thaw cycles.



Host: Rabbit  
Target Name: NUGGC  
Sample Tissue: PANC1 Cell Lysate  
Antibody Dilution: 1.0µg/ml

**Western Blotting**

**Image 1.** Host: Rabbit Target Name: NUGGC Sample Type: PANC1 Whole Cell lysates Antibody Dilution: 1.0ug/ml