



Datasheet for ABIN2791430  
**anti-OR6C1 antibody (C-Term)**



[Go to Product page](#)

1 Image

Overview

Quantity:	100 µL
Target:	OR6C1
Binding Specificity:	C-Term
Reactivity:	Human, Mouse, Pig, Rabbit, Rat, Cow, Dog, Guinea Pig, Horse
Host:	Rabbit
Clonality:	Polyclonal
Conjugate:	This OR6C1 antibody is un-conjugated
Application:	Western Blotting (WB)

Product Details

Immunogen:	The immunogen is a synthetic peptide directed towards the C-terminal region of Human OR6C1
Sequence:	PSTSQRKAF STCSSHMVVV SISYGSCIFM YIKPSAKDRV SLSKGVAILN
Predicted Reactivity:	Cow: 100%, Dog: 86%, Guinea Pig: 86%, Horse: 100%, Human: 100%, Mouse: 79%, Pig: 100%, Rabbit: 86%, Rat: 85%
Characteristics:	This is a rabbit polyclonal antibody against OR6C1. It was validated on Western Blot.
Purification:	Affinity Purified

Target Details

Target:	OR6C1
Alternative Name:	OR6C1 ( <a href="#">OR6C1 Products</a> )

## Target Details

---

**Background:** Olfactory receptors interact with odorant molecules in the nose, to initiate a neuronal response that triggers the perception of a smell. The olfactory receptor proteins are members of a large family of G-protein-coupled receptors (GPCR) arising from single coding-exon genes. Olfactory receptors share a 7-transmembrane domain structure with many neurotransmitter and hormone receptors and are responsible for the recognition and G protein-mediated transduction of odorant signals. The olfactory receptor gene family is the largest in the genome. The nomenclature assigned to the olfactory receptor genes and proteins for this organism is independent of other organisms.

Alias Symbols: OST267

Protein Size: 312

---

**Molecular Weight:** 36 kDa

---

**Gene ID:** 390321

---

**NCBI Accession:** [NM\\_001005182](#), [NP\\_001005182](#)

---

**UniProt:** [Q96RD1](#)

---

## Application Details

---

**Application Notes:** Optimal working dilutions should be determined experimentally by the investigator.

---

**Comment:** Antigen size: 312 AA

---

**Restrictions:** For Research Use only

---

## Handling

---

**Format:** Liquid

---

**Concentration:** Lot specific

---

**Buffer:** Liquid. Purified antibody supplied in 1x PBS buffer with 0.09 % (w/v) sodium azide and 2 % sucrose.

---

**Preservative:** Sodium azide

---

**Precaution of Use:** This product contains Sodium azide: a POISONOUS AND HAZARDOUS SUBSTANCE which should be handled by trained staff only.

---

**Handling Advice:** Avoid repeated freeze-thaw cycles.

---

**Storage:** -20 °C

---

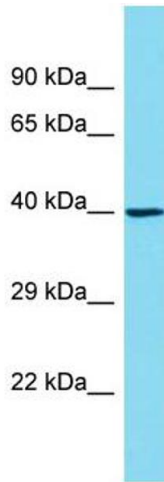
## Handling

---

Storage Comment: For short term use, store at 2-8°C up to 1 week. For long term storage, store at -20°C in small aliquots to prevent freeze-thaw cycles.

## Images

---



### Western Blotting

**Image 1.** Host: Rabbit Target Name: OR6C1 Sample Type: 293T Whole Cell lysates Antibody Dilution: 1.0ug/ml