



[Go to Product page](#)

Datasheet for ABIN2791436
anti-C10ORF120 antibody (C-Term)

1 Image

Overview

Quantity:	100 µL
Target:	C10ORF120
Binding Specificity:	C-Term
Reactivity:	Human
Host:	Rabbit
Clonality:	Polyclonal
Conjugate:	This C10ORF120 antibody is un-conjugated
Application:	Western Blotting (WB)

Product Details

Immunogen:	The immunogen is a synthetic peptide directed towards the C-terminal region of Human C10orf120
Sequence:	ANQDKKEEAE GKNTKRREIK MNVVFKSKEP KKCLTYHGND RKSFLPAKKP
Predicted Reactivity:	Human: 100%
Characteristics:	This is a rabbit polyclonal antibody against C10orf120. It was validated on Western Blot.
Purification:	Affinity Purified

Target Details

Target:	C10ORF120
Alternative Name:	C10orf120 (C10ORF120 Products)

Target Details

Background: The function of this protein remains unknown.
Alias Symbols: bA318C4.1
Protein Size: 335

Molecular Weight: 39 kDa

Gene ID: 399814

NCBI Accession: [NM_001010912](#), [NP_001010912](#)

UniProt: [Q5SQS8](#)

Application Details

Application Notes: Optimal working dilutions should be determined experimentally by the investigator.

Comment: Antigen size: 335 AA

Restrictions: For Research Use only

Handling

Format: Liquid

Concentration: Lot specific

Buffer: Liquid. Purified antibody supplied in 1x PBS buffer with 0.09 % (w/v) sodium azide and 2 % sucrose.

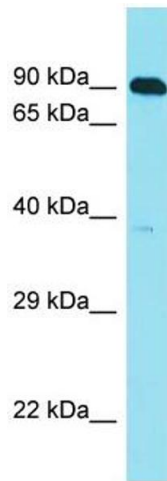
Preservative: Sodium azide

Precaution of Use: This product contains Sodium azide: a POISONOUS AND HAZARDOUS SUBSTANCE which should be handled by trained staff only.

Handling Advice: Avoid repeated freeze-thaw cycles.

Storage: -20 °C

Storage Comment: For short term use, store at 2-8°C up to 1 week. For long term storage, store at -20°C in small aliquots to prevent freeze-thaw cycles.



Western Blotting

Image 1. Host: Rabbit Target Name: C10orf120 Sample Type: HepG2 Whole Cell lysates Antibody Dilution: 1.0ug/ml