



[Go to Product page](#)

Datasheet for ABIN2791439

anti-C17orf102 antibody (Middle Region)

1 Image

Overview

Quantity:	100 µL
Target:	C17orf102 (C17ORF102)
Binding Specificity:	Middle Region
Reactivity:	Human, Rabbit
Host:	Rabbit
Clonality:	Polyclonal
Conjugate:	This C17orf102 antibody is un-conjugated
Application:	Western Blotting (WB)

Product Details

Immunogen:	The immunogen is a synthetic peptide directed towards the middle region of Human C17orf102
Sequence:	FCSRSSRGAG RGHPTPTPRV RWALAGNQPR CCAQLLSGRG GSGAQLRAGW
Predicted Reactivity:	Human: 100%, Rabbit: 93%
Characteristics:	This is a rabbit polyclonal antibody against C17orf102. It was validated on Western Blot.
Purification:	Affinity Purified

Target Details

Target:	C17orf102 (C17ORF102)
Alternative Name:	C17orf102 (C17ORF102 Products)
Background:	The function of this protein remains unknown.

Target Details

Alias Symbols: -

Protein Size: 167

Molecular Weight: 18 kDa

Gene ID: 400591

NCBI Accession: [NM_207454](#), [NP_997337](#)

UniProt: [A2RUQ5](#)

Application Details

Restrictions: For Research Use only

Handling

Format: Liquid

Concentration: 1 mg/mL

Buffer: Liquid. Purified antibody supplied in 1x PBS buffer with 0.09 % (w/v) sodium azide and 2 % sucrose.

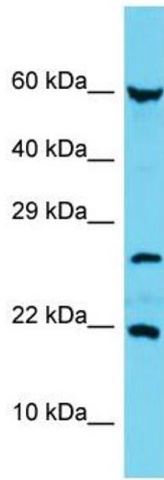
Preservative: Sodium azide

Precaution of Use: This product contains Sodium azide: a POISONOUS AND HAZARDOUS SUBSTANCE which should be handled by trained staff only.

Handling Advice: Avoid repeat freeze-thaw cycles.

Storage: -20 °C

Storage Comment: For short term use, store at 2-8°C up to 1 week. For long term storage, store at -20°C in small aliquots to prevent freeze-thaw cycles.



Western Blotting

Image 1. Host: Rabbit Target Name: C17orf102 Sample Type: MCF7 Whole Cell lysates Antibody Dilution: 1.0ug/ml