

Datasheet for ABIN2791443
anti-XKRX antibody (N-Term)[Go to Product page](#)

1 Image

Overview

Quantity:	100 µL
Target:	XKRX
Binding Specificity:	N-Term
Reactivity:	Human, Cow, Dog, Guinea Pig, Horse, Mouse, Rabbit, Rat
Host:	Rabbit
Clonality:	Polyclonal
Conjugate:	This XKRX antibody is un-conjugated
Application:	Western Blotting (WB)

Product Details

Immunogen:	The immunogen is a synthetic peptide directed towards the N-terminal region of Human XKRX
Sequence:	FVHRDLAKDK PLSLFMHLIL LGPVIRCLEA MIKYLTWKK EEQEPPYVSL
Predicted Reactivity:	Cow: 93%, Dog: 93%, Guinea Pig: 93%, Horse: 93%, Human: 100%, Mouse: 93%, Rabbit: 91%, Rat: 93%
Characteristics:	This is a rabbit polyclonal antibody against XKRX. It was validated on Western Blot.
Purification:	Affinity Purified

Target Details

Target:	XKRX
Alternative Name:	XKRX (XKRX Products)

Target Details

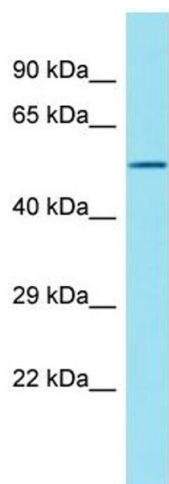
Background:	<p>This gene encodes a protein that is related to a component of the XK/Kell complex of the Kell blood group system. The encoded protein includes several transmembrane domains, is known to be exposed to the cell surface, and may function as a membrane transporter.</p> <p>Alias Symbols: XKR2, XPLAC, XRG2</p> <p>Protein Size: 449</p>
Molecular Weight:	51 kDa
Gene ID:	402415
NCBI Accession:	NM_212559 , NP_997724
UniProt:	Q6PP77

Application Details

Application Notes:	Optimal working dilutions should be determined experimentally by the investigator.
Comment:	Antigen size: 449 AA
Restrictions:	For Research Use only

Handling

Format:	Liquid
Concentration:	Lot specific
Buffer:	Liquid. Purified antibody supplied in 1x PBS buffer with 0.09 % (w/v) sodium azide and 2 % sucrose.
Preservative:	Sodium azide
Precaution of Use:	This product contains Sodium azide: a POISONOUS AND HAZARDOUS SUBSTANCE which should be handled by trained staff only.
Handling Advice:	Avoid repeated freeze-thaw cycles.
Storage:	-20 °C
Storage Comment:	For short term use, store at 2-8°C up to 1 week. For long term storage, store at -20°C in small aliquots to prevent freeze-thaw cycles.



Western Blotting

Image 1. Host: Rabbit Target Name: XKRX Sample Type: Fetal Kidney lysates Antibody Dilution: 1.0ug/ml