



[Go to Product page](#)

Datasheet for ABIN2791447  
**anti-C9ORF106 antibody (N-Term)**

1 Image

Overview

Quantity:	100 µL
Target:	C9ORF106
Binding Specificity:	N-Term
Reactivity:	Human
Host:	Rabbit
Clonality:	Polyclonal
Conjugate:	This C9ORF106 antibody is un-conjugated
Application:	Western Blotting (WB)

Product Details

Immunogen:	The immunogen is a synthetic peptide directed towards the N-terminal region of Human C9orf106
Sequence:	FSPRPLPRLW PLPGTPFLPI RALPFSASSS GKSSLVPSPS SSAHSGFRTP
Predicted Reactivity:	Human: 100%
Characteristics:	This is a rabbit polyclonal antibody against C9orf106. It was validated on Western Blot.
Purification:	Affinity Purified

Target Details

Target:	C9ORF106
Alternative Name:	C9orf106 ( <a href="#">C9ORF106 Products</a> )

## Target Details

---

Background: The function of this protein remaining unknown.  
Alias Symbols: bA65J3.5  
Protein Interaction Partner: PSMA3, PDE9A, UBC,  
Protein Size: 232

---

Molecular Weight: 24 kDa

---

Gene ID: 414318

---

NCBI Accession: [NM\\_001012715](#), [NP\\_001012733](#)

---

UniProt: [Q8NAJ2](#)

---

## Application Details

---

Restrictions: For Research Use only

---

## Handling

---

Format: Liquid

---

Concentration: 1 mg/mL

---

Buffer: Liquid. Purified antibody supplied in 1x PBS buffer with 0.09 % (w/v) sodium azide and 2 % sucrose.

---

Preservative: Sodium azide

---

Precaution of Use: This product contains Sodium azide: a POISONOUS AND HAZARDOUS SUBSTANCE which should be handled by trained staff only.

---

Handling Advice: Avoid repeat freeze-thaw cycles.

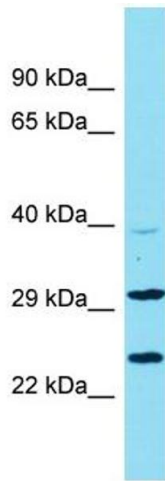
---

Storage: -20 °C

---

Storage Comment: For short term use, store at 2-8°C up to 1 week. For long term storage, store at -20°C in small aliquots to prevent freeze-thaw cycles.

---



### Western Blotting

**Image 1.** Host: Rabbit Target Name: C9orf106 Sample Type: U937 Whole Cell lysates Antibody Dilution: 1.0ug/ml