



[Go to Product page](#)

Datasheet for ABIN2791457

anti-SLC35G4 antibody (N-Term)

1 Image

Overview

Quantity:	100 µL
Target:	SLC35G4
Binding Specificity:	N-Term
Reactivity:	Human, Rat, Dog, Guinea Pig, Horse, Rabbit
Host:	Rabbit
Clonality:	Polyclonal
Conjugate:	This SLC35G4 antibody is un-conjugated
Application:	Western Blotting (WB)

Product Details

Immunogen:	The immunogen is a synthetic peptide directed towards the N-terminal region of Human SLC35G4
Sequence:	SHPYFNLPSD THPSPPSTPP SLHWHQRCQP SDATNGLLVA LLGGGLPAGF
Predicted Reactivity:	Dog: 86%, Guinea Pig: 86%, Horse: 77%, Human: 100%, Rabbit: 79%, Rat: 86%
Characteristics:	This is a rabbit polyclonal antibody against SLC35G4. It was validated on Western Blot.
Purification:	Affinity Purified

Target Details

Target:	SLC35G4
Alternative Name:	SLC35G4 (SLC35G4 Products)

Target Details

Background: The function of this protein remains unknown.
Alias Symbols: AMAC1L1
Protein Size: 338

Molecular Weight: 37 kDa

Gene ID: 646000

NCBI Accession: [XM_928960](#), [XP_934053](#)

UniProt: [P0C7Q5](#)

Application Details

Application Notes: Optimal working dilution should be determined by the investigator.

Restrictions: For Research Use only

Handling

Format: Liquid

Concentration: 1 mg/mL

Buffer: Liquid. Purified antibody supplied in 1x PBS buffer with 0.09 % (w/v) sodium azide and 2 % sucrose.

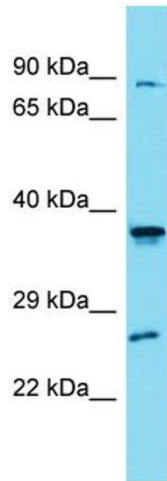
Preservative: Sodium azide

Precaution of Use: This product contains Sodium azide: a POISONOUS AND HAZARDOUS SUBSTANCE which should be handled by trained staff only.

Handling Advice: Avoid repeat freeze-thaw cycles.

Storage: -20 °C

Storage Comment: For short term use, store at 2-8°C up to 1 week. For long term storage, store at -20°C in small aliquots to prevent freeze-thaw cycles.



Western Blotting

Image 1.