

Datasheet for ABIN2791463
anti-PRSS56 antibody (N-Term)



[Go to Product page](#)

1 Image

Overview

Quantity:	100 µL
Target:	PRSS56
Binding Specificity:	N-Term
Reactivity:	Human, Mouse, Rat, Dog, Pig, Rabbit
Host:	Rabbit
Clonality:	Polyclonal
Conjugate:	This PRSS56 antibody is un-conjugated
Application:	Western Blotting (WB)

Product Details

Immunogen:	The immunogen is a synthetic peptide directed towards the N-terminal region of Human PRSS56
Sequence:	PLSFLRLSCR STRSAPNELL WVTTLAEGSR GEQAEVVPVN RILPHPKFDP
Predicted Reactivity:	Dog: 93%, Human: 100%, Mouse: 85%, Pig: 86%, Rabbit: 93%, Rat: 85%
Characteristics:	This is a rabbit polyclonal antibody against PRSS56. It was validated on Western Blot.
Purification:	Affinity Purified

Target Details

Target:	PRSS56
Alternative Name:	PRSS56 (PRSS56 Products)

Target Details

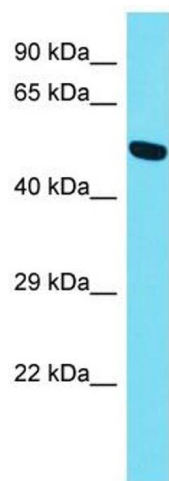
Background:	<p>This gene encodes a protein that contains a peptidase S1 domain and possesses trypsin-like serine protease activity. The encoded protein may play a role in eye development, and mutations in this gene are a cause of autosomal recessive posterior microphthalmos.</p> <p>Alias Symbols: MCOP6</p> <p>Protein Interaction Partner: UBC,</p> <p>Protein Size: 603</p>
Molecular Weight:	65 kDa
Gene ID:	646960
UniProt:	P0CW18

Application Details

Application Notes:	Optimal working dilution should be determined by the investigator.
Restrictions:	For Research Use only

Handling

Format:	Liquid
Concentration:	1 mg/mL
Buffer:	Liquid. Purified antibody supplied in 1x PBS buffer with 0.09 % (w/v) sodium azide and 2 % sucrose.
Preservative:	Sodium azide
Precaution of Use:	This product contains Sodium azide: a POISONOUS AND HAZARDOUS SUBSTANCE which should be handled by trained staff only.
Handling Advice:	Avoid repeat freeze-thaw cycles.
Storage:	-20 °C
Storage Comment:	For short term use, store at 2-8°C up to 1 week. For long term storage, store at -20°C in small aliquots to prevent freeze-thaw cycles.



Western Blotting

Image 1. Host: Rabbit Target Name: PRSS56 Sample Type: HepG2 Whole Cell lysates Antibody Dilution: 1.0ug/ml