

Datasheet for ABIN2791467

**anti-XAGE1B/GAGED2 antibody (Middle Region)**[Go to Product page](#)**1** Image

## Overview

Quantity:	100 µL
Target:	XAGE1B/GAGED2 (XAGE1B)
Binding Specificity:	Middle Region
Reactivity:	Human
Host:	Rabbit
Clonality:	Polyclonal
Conjugate:	This XAGE1B/GAGED2 antibody is un-conjugated
Application:	Western Blotting (WB)

## Product Details

Immunogen:	The immunogen is a synthetic peptide directed towards the middle region of Human XAGE1B
Sequence:	HERHTQTQNH TASPRSPVME SPKKKNQQLK VGILHLGSRQ KKIRIQLRSQ
Predicted Reactivity:	Human: 100%
Characteristics:	This is a rabbit polyclonal antibody against XAGE1B. It was validated on Western Blot.
Purification:	Affinity Purified

## Target Details

Target:	XAGE1B/GAGED2 (XAGE1B)
Alternative Name:	XAGE1B ( <a href="#">XAGE1B Products</a> )
Background:	This gene is a member of the XAGE subfamily, which belongs to the GAGE family. The GAGE

## Target Details

---

genes are expressed in a variety of tumors and in some fetal and reproductive tissues. This gene is strongly expressed in Ewing's sarcoma, alveolar rhabdomyosarcoma and normal testis. The protein encoded by this gene contains a nuclear localization signal and shares a sequence similarity with other GAGE/PAGE proteins. Because of the expression pattern and the sequence similarity, this protein also belongs to a family of CT (cancer-testis) antigens. Alternative splicing of this gene, in addition to alternative transcription start sites, results in multiple transcript variants.

Alias Symbols: CT12.1, CT12.1B, CTP9, GAGED2

Protein Size: 160

---

Molecular Weight: 17 kDa

---

Gene ID: 653220

---

NCBI Accession: [NM\\_001097595](#), [NP\\_001091064](#)

## Application Details

---

Application Notes: Optimal working dilution should be determined by the investigator.

---

Restrictions: For Research Use only

## Handling

---

Format: Liquid

---

Concentration: 1 mg/mL

---

Buffer: Liquid. Purified antibody supplied in 1x PBS buffer with 0.09 % (w/v) sodium azide and 2 % sucrose.

---

Preservative: Sodium azide

---

Precaution of Use: This product contains Sodium azide: a POISONOUS AND HAZARDOUS SUBSTANCE which should be handled by trained staff only.

---

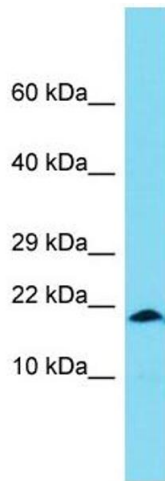
Handling Advice: Avoid repeat freeze-thaw cycles.

---

Storage: -20 °C

---

Storage Comment: For short term use, store at 2-8°C up to 1 week. For long term storage, store at -20°C in small aliquots to prevent freeze-thaw cycles.



### Western Blotting

**Image 1.** Host: Rabbit Target Name: XAGE1B Sample Type: OVCAR-3 Whole Cell lysates Antibody Dilution: 1.0ug/ml