



[Go to Product page](#)

Datasheet for ABIN2791474  
**anti-C2orf24 antibody (N-Term)**

1 Image

Overview

Quantity:	100 µL
Target:	C2orf24
Binding Specificity:	N-Term
Reactivity:	Human, Mouse, Rat, Cow, Guinea Pig, Horse, Rabbit, Dog, Zebrafish (Danio rerio)
Host:	Rabbit
Clonality:	Polyclonal
Conjugate:	This C2orf24 antibody is un-conjugated
Application:	Western Blotting (WB)

Product Details

Immunogen:	The immunogen is a synthetic peptide directed towards the N-terminal region of Human CNPPD1
Sequence:	ISPCAMMLAL VYIERLRHRN PDYLQHVSSS DLFLISMMVA SKYLYDEGEE
Predicted Reactivity:	Cow: 100%, Dog: 93%, Guinea Pig: 100%, Horse: 100%, Human: 100%, Mouse: 100%, Rabbit: 100%, Rat: 100%, Zebrafish: 79%
Characteristics:	This is a rabbit polyclonal antibody against CNPPD1. It was validated on Western Blot.
Purification:	Affinity Purified

Target Details

Target:	C2orf24
---------	---------

## Target Details

---

Alternative Name: CNPPD1 ([C2orf24 Products](#))

---

Background: The function of this protein remains unknown.  
Alias Symbols: C2orf24, CGI-57  
Protein Interaction Partner: UBC,  
Protein Size: 410

---

Molecular Weight: 45 kDa

---

Gene ID: 27013

---

NCBI Accession: [NM\\_015680](#), [NP\\_056495](#)

---

UniProt: [Q9BV87](#)

---

## Application Details

---

Restrictions: For Research Use only

---

## Handling

---

Format: Liquid

---

Concentration: 1 mg/mL

---

Buffer: Liquid. Purified antibody supplied in 1x PBS buffer with 0.09 % (w/v) sodium azide and 2 % sucrose.

---

Preservative: Sodium azide

---

Precaution of Use: This product contains Sodium azide: a POISONOUS AND HAZARDOUS SUBSTANCE which should be handled by trained staff only.

---

Handling Advice: Avoid repeat freeze-thaw cycles.

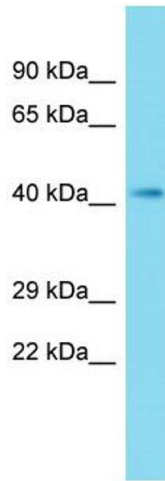
---

Storage: -20 °C

---

Storage Comment: For short term use, store at 2-8°C up to 1 week. For long term storage, store at -20°C in small aliquots to prevent freeze-thaw cycles.

---



### Western Blotting

**Image 1.** Host: Rabbit Target Name: CNPPD1 Sample Type: Fetal Liver lysates Antibody Dilution: 1.0ug/ml