



[Go to Product page](#)

Datasheet for ABIN2791478  
**anti-CT47B1 antibody (C-Term)**

1 Image

Overview

Quantity:	100 µL
Target:	CT47B1
Binding Specificity:	C-Term
Reactivity:	Human
Host:	Rabbit
Clonality:	Polyclonal
Conjugate:	This CT47B1 antibody is un-conjugated
Application:	Western Blotting (WB)

Product Details

Immunogen:	The immunogen is a synthetic peptide directed towards the C-terminal region of Human CT47B1
Sequence:	PPEEAAEEKL TEEATEEPAA EEPTSEEAVA PEEVTKSQPE KWDEEAQDAA
Predicted Reactivity:	Human: 100%
Characteristics:	This is a rabbit polyclonal antibody against CT47B1. It was validated on Western Blot.
Purification:	Affinity Purified

Target Details

Target:	CT47B1
Alternative Name:	CT47B1 ( <a href="#">CT47B1 Products</a> )

## Target Details

---

Background: The function of this protein remains unknown.  
Alias Symbols: CT47.13, CT47A13  
Protein Size: 299

---

Molecular Weight: 31 kDa

---

Gene ID: 643311

---

NCBI Accession: [NM\\_001145718](#), [NP\\_001139190](#)

---

UniProt: [P0C2W7](#)

---

## Application Details

---

Restrictions: For Research Use only

---

## Handling

---

Format: Liquid

---

Concentration: 1 mg/mL

---

Buffer: Liquid. Purified antibody supplied in 1x PBS buffer with 0.09 % (w/v) sodium azide and 2 % sucrose.

---

Preservative: Sodium azide

---

Precaution of Use: This product contains Sodium azide: a POISONOUS AND HAZARDOUS SUBSTANCE which should be handled by trained staff only.

---

Handling Advice: Avoid repeat freeze-thaw cycles.

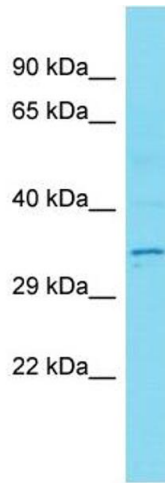
---

Storage: -20 °C

---

Storage Comment: For short term use, store at 2-8°C up to 1 week. For long term storage, store at -20°C in small aliquots to prevent freeze-thaw cycles.

---



### Western Blotting

**Image 1.** Host: Rabbit Target Name: CT47B1 Sample Type: Placenta lysates Antibody Dilution: 1.0ug/ml