

Datasheet for ABIN2791482  
**anti-CXORF23 antibody (N-Term)**



[Go to Product page](#)

1 Image

## Overview

Quantity:	100 µL
Target:	CXORF23
Binding Specificity:	N-Term
Reactivity:	Human, Dog, Horse, Pig
Host:	Rabbit
Clonality:	Polyclonal
Conjugate:	This CXORF23 antibody is un-conjugated
Application:	Western Blotting (WB)

## Product Details

Immunogen:	The immunogen is a synthetic peptide directed towards the N-terminal region of Human CXorf23
Sequence:	DDHRVRGSGK G GKPPQRSIA DSFRFEGKWH EDEL RHQRIQ EEKYSQSTRR
Predicted Reactivity:	Dog: 100%, Horse: 100%, Human: 100%, Pig: 93%
Characteristics:	This is a rabbit polyclonal antibody against CXorf23. It was validated on Western Blot.
Purification:	Affinity Purified

## Target Details

Target:	CXORF23
Alternative Name:	CXorf23 ( <a href="#">CXORF23 Products</a> )

## Target Details

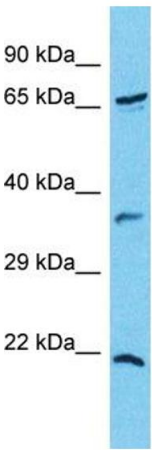
Background:	The function of this protein remains unknown. Protein Interaction Partner: Erh, Protein Size: 625
Molecular Weight:	68 kDa
Gene ID:	256643

## Application Details

Restrictions:	For Research Use only
---------------	-----------------------

## Handling

Format:	Liquid
Concentration:	1 mg/mL
Buffer:	Liquid. Purified antibody supplied in 1x PBS buffer with 0.09 % (w/v) sodium azide and 2 % sucrose.
Preservative:	Sodium azide
Precaution of Use:	This product contains Sodium azide: a POISONOUS AND HAZARDOUS SUBSTANCE which should be handled by trained staff only.
Handling Advice:	Avoid repeat freeze-thaw cycles.
Storage:	-20 °C
Storage Comment:	For short term use, store at 2-8°C up to 1 week. For long term storage, store at -20°C in small aliquots to prevent freeze-thaw cycles.



Host: Rabbit  
Target Name: CXorf23  
Sample Tissue: COLO205 Cell Lysate  
Antibody Dilution: 1.0µg/ml

Western Blotting

**Image 1.** Host: Rabbit Target Name: CXorf23 Sample Type: COLO205 Whole cell lysates Antibody Dilution: 1.0ug/ml