



Datasheet for ABIN2791491  
**anti-EFCAB1 antibody (Middle Region)**



[Go to Product page](#)

**1** Image

Overview

Quantity:	100 µL
Target:	EFCAB1
Binding Specificity:	Middle Region
Reactivity:	Human, Horse, Mouse, Rat, Dog, Guinea Pig, Rabbit, Zebrafish (Danio rerio), Cow
Host:	Rabbit
Clonality:	Polyclonal
Conjugate:	This EFCAB1 antibody is un-conjugated
Application:	Western Blotting (WB)

Product Details

Immunogen:	The immunogen is a synthetic peptide directed towards the middle region of Human EFCAB1
Sequence:	EKMKYCFEVF DLNGDGFISK EEMFHMLKNS LLKQPSEEDP DEGIKDLVEI
Predicted Reactivity:	Cow: 100%, Dog: 100%, Guinea Pig: 100%, Horse: 100%, Human: 100%, Mouse: 100%, Rabbit: 100%, Rat: 100%, Zebrafish: 92%
Characteristics:	This is a rabbit polyclonal antibody against EFCAB1. It was validated on Western Blot.
Purification:	Affinity Purified

Target Details

Target:	EFCAB1
Alternative Name:	EFCAB1 ( <a href="#">EFCAB1 Products</a> )

## Target Details

---

Background: The function of this protein remains unknown.  
Alias Symbols: -  
Protein Size: 211

---

Molecular Weight: 23 kDa

---

Gene ID: 79645

---

NCBI Accession: [NM\\_024593](#), [NP\\_078869](#)

---

UniProt: [Q9HAE3](#)

---

## Application Details

---

Restrictions: For Research Use only

---

## Handling

---

Format: Liquid

---

Concentration: 1 mg/mL

---

Buffer: Liquid. Purified antibody supplied in 1x PBS buffer with 0.09 % (w/v) sodium azide and 2 % sucrose.

---

Preservative: Sodium azide

---

Precaution of Use: This product contains Sodium azide: a POISONOUS AND HAZARDOUS SUBSTANCE which should be handled by trained staff only.

---

Handling Advice: Avoid repeat freeze-thaw cycles.

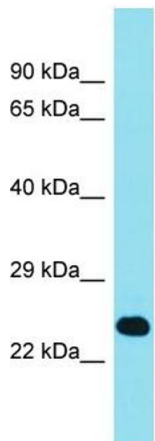
---

Storage: -20 °C

---

Storage Comment: For short term use, store at 2-8°C up to 1 week. For long term storage, store at -20°C in small aliquots to prevent freeze-thaw cycles.

---



Host: Rabbit  
Target Name: EFCAB1  
Sample Tissue: RPMI-8226 Cell Lysate  
Antibody Dilution: 1.0µg/ml

### Western Blotting

**Image 1.** Host: Rabbit Target Name: EFCAB1 Sample  
Tissue: Human RPMI-8226 Whole Cell Antibody Dilution:  
1ug/ml