



[Go to Product page](#)

Datasheet for ABIN2791501

anti-FAM21D antibody (C-Term)

1 Image

Overview

Quantity:	100 µL
Target:	FAM21D
Binding Specificity:	C-Term
Reactivity:	Cow, Dog, Horse, Human, Pig, Rabbit, Rat
Host:	Rabbit
Clonality:	Polyclonal
Conjugate:	This FAM21D antibody is un-conjugated
Application:	Western Blotting (WB)

Product Details

Immunogen:	The immunogen is a synthetic peptide directed towards the C-terminal region of human FAM21A
Sequence:	KKVEAKSIFD DDMDDIFSTG IQAKTTKPKS RSAQAPEPR FEHKVSNIFD
Predicted Reactivity:	Cow: 77%, Dog: 93%, Horse: 86%, Human: 100%, Pig: 85%, Rabbit: 79%, Rat: 77%
Characteristics:	This is a rabbit polyclonal antibody against FAM21D. It was validated on Western Blot.
Purification:	Affinity Purified

Target Details

Target:	FAM21D
Alternative Name:	FAM21D (FAM21D Products)

Target Details

Background: Alias Symbols: FAM21B, bA98I6.1, bA56A21.1
Protein Size: 308

Molecular Weight: 33 kDa

Gene ID: 387680

NCBI Accession: [NM_001005751](#), [NP_001005751](#)

UniProt: [Q5SNT6](#)

Application Details

Restrictions: For Research Use only

Handling

Format: Liquid

Concentration: 1 mg/mL

Buffer: Liquid. Purified antibody supplied in 1x PBS buffer with 0.09 % (w/v) sodium azide and 2 % sucrose.

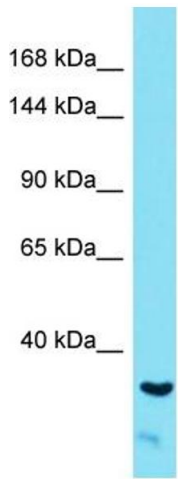
Preservative: Sodium azide

Precaution of Use: This product contains Sodium azide: a POISONOUS AND HAZARDOUS SUBSTANCE which should be handled by trained staff only.

Handling Advice: Avoid repeat freeze-thaw cycles.

Storage: -20 °C

Storage Comment: For short term use, store at 2-8°C up to 1 week. For long term storage, store at -20°C in small aliquots to prevent freeze-thaw cycles.



Host: Rabbit
Target Name: FAM21D
Sample Tissue: A549 Cell Lysate
Antibody Dilution: 1.0µg/ml

Western Blotting

Image 1. Host: Rabbit Target Name: FAM21A Sample
Tissue: Human A549 Whole Cell Antibody Dilution: 1 ug/ml