

Datasheet for ABIN2791503
anti-FAM25A antibody (N-Term)



[Go to Product page](#)

1 Image

Overview

Quantity:	100 µL
Target:	FAM25A
Binding Specificity:	N-Term
Reactivity:	Human, Rabbit, Rat
Host:	Rabbit
Clonality:	Polyclonal
Conjugate:	This FAM25A antibody is un-conjugated
Application:	Western Blotting (WB)

Product Details

Immunogen:	The immunogen is a synthetic peptide directed towards the N-terminal region of Human FAM25A
Sequence:	EGAIHAVEEV VKEVVGHAKE TGEKAIAEAI KKAQESGDKK MKEITETVTN
Predicted Reactivity:	Human: 100%, Rabbit: 85%, Rat: 85%
Characteristics:	This is a rabbit polyclonal antibody against FAM25A. It was validated on Western Blot.
Purification:	Affinity Purified

Target Details

Target:	FAM25A
Alternative Name:	FAM25A (FAM25A Products)

Target Details

Background: The function of this protein remains unknown.
Alias Symbols: FAM25B, FAM25C, FAM25G, bA96C23.5
Protein Size: 89

Molecular Weight: 9 kDa

Gene ID: 643161

NCBI Accession: [NM_001146157](#), [NP_001139629](#)

UniProt: [B3EWG3](#)

Application Details

Restrictions: For Research Use only

Handling

Format: Liquid

Concentration: 1 mg/mL

Buffer: Liquid. Purified antibody supplied in 1x PBS buffer with 0.09 % (w/v) sodium azide and 2 % sucrose.

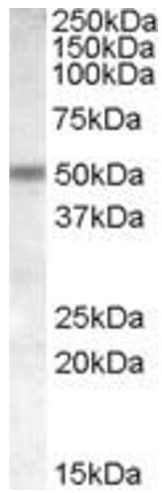
Preservative: Sodium azide

Precaution of Use: This product contains Sodium azide: a POISONOUS AND HAZARDOUS SUBSTANCE which should be handled by trained staff only.

Handling Advice: Avoid repeat freeze-thaw cycles.

Storage: -20 °C

Storage Comment: For short term use, store at 2-8°C up to 1 week. For long term storage, store at -20°C in small aliquots to prevent freeze-thaw cycles.



Western Blotting

Image 1.