



[Go to Product page](#)

Datasheet for ABIN2791511

anti-FAM86A antibody (C-Term)

1 Image

Overview

Quantity:	100 µL
Target:	FAM86A
Binding Specificity:	C-Term
Reactivity:	Human, Rat, Cow, Dog, Guinea Pig, Horse
Host:	Rabbit
Clonality:	Polyclonal
Conjugate:	This FAM86A antibody is un-conjugated
Application:	Western Blotting (WB)

Product Details

Immunogen:	The immunogen is a synthetic peptide directed towards the C-terminal region of Human FAM86A
Sequence:	CREHQRAPEV YVAF TVRNPE TCQLFTTELG RAGIRWEVEP RHEQKLFPE
Predicted Reactivity:	Cow: 79%, Dog: 82%, Guinea Pig: 79%, Horse: 79%, Human: 100%, Rat: 86%
Characteristics:	This is a rabbit polyclonal antibody against FAM86A. It was validated on Western Blot.
Purification:	Affinity Purified

Target Details

Target:	FAM86A
Alternative Name:	FAM86A (FAM86A Products)

Target Details

Background: The function of this protein remains unknown.
Alias Symbols: -
Protein Interaction Partner: EFT1, EFT2, PRTFDC1, EEF2, FAM86B2, EEF2KMT, FAM86C1, UBC, HSPA5,
Protein Size: 296

Molecular Weight: 32 kDa

Gene ID: 196483

NCBI Accession: [NM_201598](#), [NP_963892](#)

UniProt: [D3DUE9](#)

Application Details

Restrictions: For Research Use only

Handling

Format: Liquid

Concentration: 1 mg/mL

Buffer: Liquid. Purified antibody supplied in 1x PBS buffer with 0.09 % (w/v) sodium azide and 2 % sucrose.

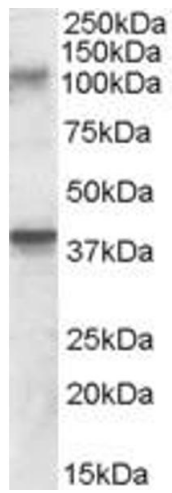
Preservative: Sodium azide

Precaution of Use: This product contains Sodium azide: a POISONOUS AND HAZARDOUS SUBSTANCE which should be handled by trained staff only.

Handling Advice: Avoid repeat freeze-thaw cycles.

Storage: -20 °C

Storage Comment: For short term use, store at 2-8°C up to 1 week. For long term storage, store at -20°C in small aliquots to prevent freeze-thaw cycles.



Western Blotting

Image 1.