



[Go to Product page](#)

Datasheet for ABIN2791517
anti-PCED1B antibody (C-Term)

1 Image

Overview

| | |
|----------------------|---------------------------------------|
| Quantity: | 100 µL |
| Target: | PCED1B |
| Binding Specificity: | C-Term |
| Reactivity: | Human |
| Host: | Rabbit |
| Clonality: | Polyclonal |
| Conjugate: | This PCED1B antibody is un-conjugated |
| Application: | Western Blotting (WB) |

Product Details

| | |
|-----------------------|---|
| Immunogen: | The immunogen is a synthetic peptide directed towards the C-terminal region of Human PCED1B |
| Sequence: | CLSQLLLAHV ADAWGVELPH RHPVGEWIKK KKPGRVEGP PQANRNHPAL |
| Predicted Reactivity: | Human: 100% |
| Characteristics: | This is a rabbit polyclonal antibody against PCED1B. It was validated on Western Blot. |
| Purification: | Affinity Purified |

Target Details

| | |
|-------------------|--|
| Target: | PCED1B |
| Alternative Name: | PCED1B (PCED1B Products) |

Target Details

Background: The function of this protein remains unknown.
Alias Symbols: FAM113B
Protein Interaction Partner: NOTCH2NL,
Protein Size: 432

Molecular Weight: 49 kDa

Gene ID: 91523

NCBI Accession: [NM_138371](#), [NP_612380](#)

UniProt: [Q96HM7](#)

Application Details

Application Notes: Optimal working dilution should be determined by the investigator.

Restrictions: For Research Use only

Handling

Format: Liquid

Concentration: 1 mg/mL

Buffer: Liquid. Purified antibody supplied in 1x PBS buffer with 0.09 % (w/v) sodium azide and 2 % sucrose.

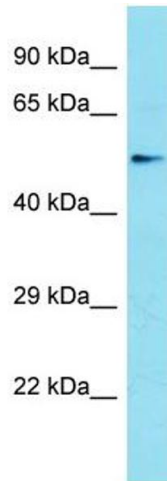
Preservative: Sodium azide

Precaution of Use: This product contains Sodium azide: a POISONOUS AND HAZARDOUS SUBSTANCE which should be handled by trained staff only.

Handling Advice: Avoid repeat freeze-thaw cycles.

Storage: -20 °C

Storage Comment: For short term use, store at 2-8°C up to 1 week. For long term storage, store at -20°C in small aliquots to prevent freeze-thaw cycles.



Western Blotting

Image 1.