



[Go to Product page](#)

Datasheet for ABIN2791546

anti-Fidgetin-Like 2 antibody (Middle Region)

1 Image

Overview

Quantity:	100 µL
Target:	Fidgetin-Like 2 (FIGNL2)
Binding Specificity:	Middle Region
Reactivity:	Human, Cow, Guinea Pig, Mouse
Host:	Rabbit
Clonality:	Polyclonal
Conjugate:	This Fidgetin-Like 2 antibody is un-conjugated
Application:	Western Blotting (WB)

Product Details

Immunogen:	The immunogen is a synthetic peptide directed towards the middle region of Human FIGNL2
Sequence:	PGLPAPTPLP APAPPTAYGF PTAAPGAESG LSLKRKAADE GPEGRYRKYA
Predicted Reactivity:	Cow: 86%, Guinea Pig: 86%, Human: 100%, Mouse: 79%
Characteristics:	This is a rabbit polyclonal antibody against FIGNL2. It was validated on Western Blot.
Purification:	Affinity Purified

Target Details

Target:	Fidgetin-Like 2 (FIGNL2)
Alternative Name:	FIGNL2 (FIGNL2 Products)
Background:	The function of this protein remains unknown.

Target Details

Alias Symbols: -

Protein Size: 653

Molecular Weight: 66 kDa

Gene ID: 401720

NCBI Accession: [NM_001013690](#), [NP_001013712](#)

UniProt: [A6NMB9](#)

Application Details

Restrictions: For Research Use only

Handling

Format: Liquid

Concentration: 1 mg/mL

Buffer: Liquid. Purified antibody supplied in 1x PBS buffer with 0.09 % (w/v) sodium azide and 2 % sucrose.

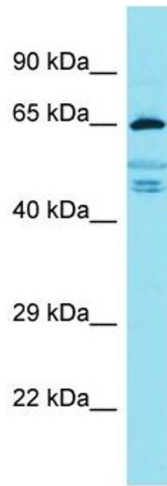
Preservative: Sodium azide

Precaution of Use: This product contains Sodium azide: a POISONOUS AND HAZARDOUS SUBSTANCE which should be handled by trained staff only.

Handling Advice: Avoid repeat freeze-thaw cycles.

Storage: -20 °C

Storage Comment: For short term use, store at 2-8°C up to 1 week. For long term storage, store at -20°C in small aliquots to prevent freeze-thaw cycles.



Western Blotting

Image 1.