



[Go to Product page](#)

Datasheet for ABIN2791564
anti-GPR176 antibody (C-Term)

1 Image

Overview

Quantity:	100 µL
Target:	GPR176
Binding Specificity:	C-Term
Reactivity:	Human, Mouse, Rat, Cow, Dog, Horse, Guinea Pig, Pig, Rabbit, Saccharomyces cerevisiae
Host:	Rabbit
Clonality:	Polyclonal
Conjugate:	This GPR176 antibody is un-conjugated
Application:	Western Blotting (WB)

Product Details

Immunogen:	The immunogen is a synthetic peptide directed towards the C-terminal region of Human GPR176
Sequence:	LEPSIRSGSQ LLEMFGHQQ QIFKPTDEE ESEAKYIGSA DFQAKEIFST
Predicted Reactivity:	Cow: 100%, Dog: 100%, Guinea Pig: 85%, Horse: 100%, Human: 100%, Mouse: 92%, Pig: 92%, Rabbit: 85%, Rat: 100%, Yeast: 90%
Characteristics:	This is a rabbit polyclonal antibody against GPR176. It was validated on Western Blot.
Purification:	Affinity Purified

Target Details

Target:	GPR176
---------	--------

Target Details

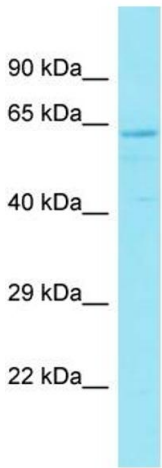
Alternative Name:	GPR176 (GPR176 Products)
Background:	Members of the G protein-coupled receptor family, such as GPR176, are cell surface receptors involved in responses to hormones, growth factors, and neurotransmitters. Alias Symbols: GPR, Gm1012 Protein Interaction Partner: UBC, Protein Size: 515
Molecular Weight:	56 kDa
Gene ID:	11245
NCBI Accession:	NM_007223 , NP_009154
UniProt:	Q14439

Application Details

Restrictions:	For Research Use only
---------------	-----------------------

Handling

Format:	Liquid
Concentration:	1 mg/mL
Buffer:	Liquid. Purified antibody supplied in 1x PBS buffer with 0.09 % (w/v) sodium azide and 2 % sucrose.
Preservative:	Sodium azide
Precaution of Use:	This product contains Sodium azide: a POISONOUS AND HAZARDOUS SUBSTANCE which should be handled by trained staff only.
Handling Advice:	Avoid repeat freeze-thaw cycles.
Storage:	-20 °C
Storage Comment:	For short term use, store at 2-8°C up to 1 week. For long term storage, store at -20°C in small aliquots to prevent freeze-thaw cycles.



Host: Rabbit
Target Name: GPR176
Sample Tissue: PANC1 Cell Lysate
Antibody Dilution: 1.0µg/ml

Western Blotting

Image 1. Host: Rabbit Target Name: GPR176 Sample Type: PANC1 Whole Cell lysates Antibody Dilution: 1.0ug/ml