

Datasheet for ABIN2791571  
**anti-HAUS2 antibody (C-Term)**[Go to Product page](#)

## 1 Image

## Overview

Quantity:	100 µL
Target:	HAUS2
Binding Specificity:	C-Term
Reactivity:	Human, Cow, Dog, Guinea Pig, Rabbit, Pig
Host:	Rabbit
Clonality:	Polyclonal
Conjugate:	This HAUS2 antibody is un-conjugated
Application:	Western Blotting (WB)

## Product Details

Immunogen:	The immunogen is a synthetic peptide directed towards the C-terminal region of Human HAUS2
Sequence:	LAENILKWRK QQNEVSSCIP KILAEESYLY KHDIIIMPPLP FTSKVHVQTI
Predicted Reactivity:	Cow: 79%, Dog: 79%, Guinea Pig: 82%, Human: 100%, Pig: 86%, Rabbit: 86%
Characteristics:	This is a rabbit polyclonal antibody against HAUS2. It was validated on Western Blot.
Purification:	Affinity Purified

## Target Details

Target:	HAUS2
Alternative Name:	HAUS2 ( <a href="#">HAUS2 Products</a> )
Background:	HAUS2 is 1 of 8 subunits of the 390-kD human augmin complex, or HAUS complex. The augmin

## Target Details

complex was first identified in *Drosophila*, and its name comes from the Latin verb 'augmentare,' meaning 'to increase.' The augmin complex is a microtubule-binding complex involved in microtubule generation within the mitotic spindle and is vital to mitotic spindle assembly.

Alias Symbols: C15orf25, CEP27, HsT17025

Protein Interaction Partner: TRIM28, LRPPRC, PDCD6, HDAC5, CEP170, CKAP5, IRS4, MOGS, DAP3, UBB, TUBG1, TUBA4A, SUPT6H, TRIM21, SRI, SMARCE1, RPS13, RPLP0, RPL38, RPL5, RCN2, RCN1, PSMB1, PHKG2, PCM1, MCM7, HSPA9, HSPA8, HSPA5, HSPA2, HSPA1A, HNRNPU, HDAC1, EEF1A2, CAMK2D, TUBB, LINC

Protein Size: 235

Molecular Weight: 25 kDa

Gene ID: 55142

NCBI Accession: [NM\\_018097](#), [NP\\_060567](#)

UniProt: [Q9NVX0](#)

Pathways: [M Phase](#)

## Application Details

Restrictions: For Research Use only

## Handling

Format: Liquid

Concentration: 1 mg/mL

Buffer: Liquid. Purified antibody supplied in 1x PBS buffer with 0.09 % (w/v) sodium azide and 2 % sucrose.

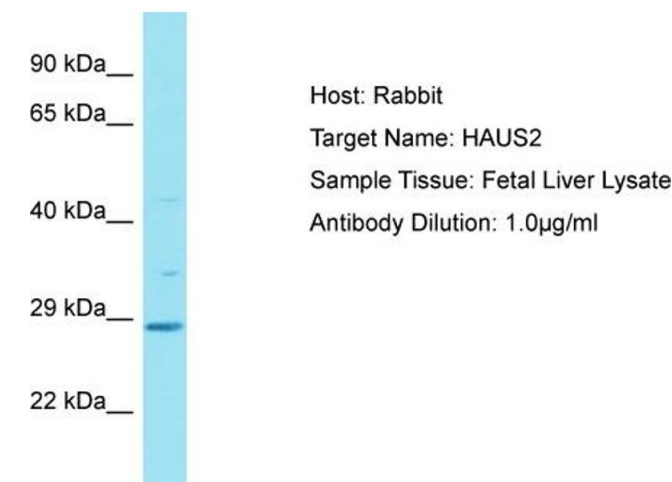
Preservative: Sodium azide

Precaution of Use: This product contains Sodium azide: a POISONOUS AND HAZARDOUS SUBSTANCE which should be handled by trained staff only.

Handling Advice: Avoid repeat freeze-thaw cycles.

Storage: -20 °C

Storage Comment: For short term use, store at 2-8°C up to 1 week. For long term storage, store at -20°C in small aliquots to prevent freeze-thaw cycles.



Western Blotting

**Image 1.** Host: Rabbit Target Name: HAUS2 Sample Tissue: Human Fetal Liver Antibody Dilution: 1ug/ml