

Datasheet for ABIN2791587  
**anti-ILDR2 antibody (C-Term)**[Go to Product page](#)

## 1 Image

## Overview

Quantity:	100 µL
Target:	ILDR2
Binding Specificity:	C-Term
Reactivity:	Human, Dog, Cow, Mouse, Rat
Host:	Rabbit
Clonality:	Polyclonal
Conjugate:	This ILDR2 antibody is un-conjugated
Application:	Western Blotting (WB)

## Product Details

Immunogen:	The immunogen is a synthetic peptide directed towards the C-terminal region of human ILDR2
Sequence:	QDDQEDASDD ALPPYSELEL TRGPSYRGRD LPYHSNSEKK RKKEPAKKTN
Predicted Reactivity:	Cow: 93%, Dog: 92%, Human: 100%, Mouse: 92%, Rat: 93%
Characteristics:	This is a rabbit polyclonal antibody against ILDR2. It was validated on Western Blot.
Purification:	Affinity Purified

## Target Details

Target:	ILDR2
Alternative Name:	ILDR2 ( <a href="#">ILDR2 Products</a> )
Background:	Alias Symbols: C1orf32, dJ782G3.1

## Target Details

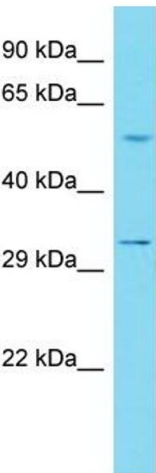
	Protein Size: 512
Molecular Weight:	56 kDa
Gene ID:	387597
NCBI Accession:	<a href="#">NM_199351</a> , <a href="#">NP_955383</a>
UniProt:	<a href="#">Q71H61</a>

## Application Details

Application Notes:	Optimal working dilution should be determined by the investigator.
Restrictions:	For Research Use only

## Handling

Format:	Liquid
Concentration:	1 mg/mL
Buffer:	Liquid. Purified antibody supplied in 1x PBS buffer with 0.09 % (w/v) sodium azide and 2 % sucrose.
Preservative:	Sodium azide
Precaution of Use:	This product contains Sodium azide: a POISONOUS AND HAZARDOUS SUBSTANCE which should be handled by trained staff only.
Handling Advice:	Avoid repeat freeze-thaw cycles.
Storage:	-20 °C
Storage Comment:	For short term use, store at 2-8°C up to 1 week. For long term storage, store at -20°C in small aliquots to prevent freeze-thaw cycles.



Host: Rabbit  
Target Name: ILDR2  
Sample Tissue: 721\_B Cell Lysate  
Antibody Dilution: 1.0µg/ml

**Western Blotting**

**Image 1.** Host: Rabbit Target Name: ILDR2 Sample Tissue: Human 721\_B Whole Cell Antibody Dilution: 1ug/ml